




**MINOT
STATE**
UNIVERSITY

**2017-2018
President's Report**

Development Foundation Board of Directors



Maynard Sandberg '55
President



Tom Probst '67
Vice President



Kathy Aas '11



Jon Backes '84



Jan Barlow '61



Kathy Gaddie



David Gowan '79



Karen Krebsbach '62



David Reiten



Robert Sando



Doris Slaaten '49
Emeritus



Myron Thompson '67



Kristi Berg '95/'00
Ex-Officio



Rick Hedberg '89
Ex-Officio



Dan Langemo
Ex-Officio



Steven Shirley
Ex-Officio



Brent Winiger
Ex-Officio



Contents

Dislevy milestone gift	2
2017-18 year in review	4 – 7
2017-18 by the numbers	8 & 9
MSU's first ever Giving Day	10 & 11
Establishing a scholarship	12
Scholarship listing	13
Donor honor roll	17 – 32

President Steven Shirley

THANK YOU for your support of MSU!

As indicated in the “Year in Review” section beginning on page 4, it has been another exciting year at Minot State University — a year full of notable accomplishments by our students, faculty, and staff. There were many positives at MSU during 2017-18, and many of these were simply not possible without your support!

Several improvements and renovations to campus facilities have recently occurred that will have a long-term positive impact for both MSU students and visitors alike. These included the new \$1.4 million Northwest Arts Center located in the lower level of the Gordon B. Olson Library, the Air-Supported Seasonal Dome covering the Herb Parker Stadium during winter months, and the Frantsvog Academic Center in the MSU Dome. Additionally, we are currently doing a fundraising campaign to replace the 40-year old seating in the Dome, and expect that project to be complete by mid-2019. All these upgrades are funded entirely through private, externally raised dollars and none would be possible without the individuals, companies, and organizations who have supported these efforts.

On page 8 you will see that another milestone for donor giving was set in the 2018

fiscal year, making this the third consecutive record year of fundraising. On April 11 we also conducted our first-ever MSU Giving Day — a 24-hour online fundraising blitz that generated over \$130,000 for MSU initiatives. These wonderful annual and single-day accomplishments would not be possible without the support and generosity of MSU alumni, friends, and supporters! THANK YOU for supporting MSU and creating another terrific year of fundraising.

In July, we announced the largest private gift in Minot State’s history. Please read about Janis Dislevy ’60 and the legacy she left to MSU through her \$4.6 million gift. Janis was a wonderful person who maintained a close affiliation with MSU throughout her life. The MSU campus and people here clearly meant a great deal to Janis, and we are so thankful for her generosity.

As we prepare for a new academic year, we also look ahead to another Legislative Session in early 2019. As you know, North Dakota has experienced some significant financial challenges the past few years, and those challenges meant budget reductions for state agencies such as Minot State University. Our state appropriation was reduced by \$8.6 million as we began the



current biennium on July 1, 2017. While we have managed the reductions and not cut any academic programs, we have reduced nearly 60 positions across campus. Initial indicators suggest the very real possibility of further reductions in the next biennium that will begin on July 1, 2019. We remain optimistic that our new strategic plan, Empowering Generations, has positioned us well along with several new initiatives to help boost student enrollment. That said, there is certainly no time where your support has ever been as important as it is right now. Whether it be scholarships to help attract the best and brightest future Beavers to cam-

pus, gifts to help support major campus renovation and facilities upgrades, specific gifts directed to Athletics, Music, Theatre, the Arts, etc., or general dollars for operating, please know your contributions play a vital role in helping soften the sting of budget reductions and ensure MSU remains a vibrant educational atmosphere for the next generation of students.

THANK YOU for supporting MSU and our students, for your interest in MSU all year-long, and for reading this 2017-18 President’s Report. I look forward to seeing you during upcoming alumni and friend events throughout the year ahead.

THANK YOU, AND AS ALWAYS, GO BEAVERS!

“

She was

soft spoken,

very intelligent,

extremely thoughtful,

accurate in her comments

— just a wonderful human being”

ANIS DISLEVY didn't graduate from Minot State University with a degree in finance. She wasn't a CEO of a Fortune 500 company, a stock broker, or manager of an investment firm. But an astute sense of the stock market, pride in her education at Minot State, and a philanthropic spirit will leave an indelible mark on Minot State's College of Business.

Dislevy bequeathed a portion of her estate to MSU after passing away unexpectedly in June of 2016. Her gift of \$4.6 million announced at the end of July is the largest single donation in Minot State's history. That gift brings the total donated by Dislevy over the past 15 years to \$5.3 million. She established the Janis Ann Dislevy Trust Endowed Scholarship in 2003 and the Janis Ann Dislevy Endowed Chair in 2007.

"She taught herself investing," retired College of Business Dean

JoAnn Linrud said. "Obviously she had academic degrees, but really she just taught herself how to examine investments and stocks. It had little to do with her work. It was very much like a hobby, a passion, an avid interest.

"We rarely talked about what she did for the State of California — the accounting area that she worked in. But choosing her own stocks and following the market, that was fun for her. Her eyes would just light up."

While her final gift total is impressive, she found other ways to

give back to the university. As a shareholder in Berkshire Hathaway — a multinational conglomerate holding company headquartered in Omaha, Neb., chaired by Warren Buffett — she was granted credentials to their annual shareholder's meeting. Dislevy would use her extra credentials to bring Minot State faculty and students to the meeting.

"The students were just in awe. What an unbelievable learning tool to see the atmosphere of an annual meeting like that and to hear Warren Buffet speak," Linrud said. "I can't believe she gave us that honor."

Dislevy did earn her bachelor's degree at MSU in education in 1960 and holds master's degrees from Wayne State College (Neb.) and the Consortium of the California State University and Colleges (Calif.).

She taught business and home economics at Drake High School for one year before moving to California. Dislevy was an adult education instructor and worked for Aerojet General Corporation before a 22-year career with the State of California working as a stenographer, secretary, accounting technician, accountant, and accounting officer. She retired from the State of California in 1999.

Along with her passion for the stock market, she was proud of her family farm — Dislevy Centennial Farm, founded by her grandparents Miron and Christine Dislevy and later owned by her parents, Arthur and Elsie Dislevy. The farm, founded in 1902, was recognized as a North Dakota Centennial Farm in 2004.

"I think she perceived herself coming from humble beginnings but believed she would do something different," Linrud said of Dislevy's education. "The farm was very special to her, but it wasn't going to be where she earned her livelihood. I think that was a big part of her giving back. She understood that her education helped her."

Former MSU Vice President for Advancement and Executive Director for the Minot State University Development Foundation Marv Semrau agrees her philanthropy had a lot to do with her experience at MSU.

"I think she recognized at least a portion of her success was due to the education she had while attending Minot State.

Here's a person who invested wisely over the course of her life and was able to help others be successful," he said. "Her financial support for students and for faculty helped them create more Janis Dislevys.

"She was soft spoken, very intelligent, extremely thoughtful, and very accurate in her comments — just a wonderful human being."

Dislevy was a life member of the National Association of Investors Corporation and American Association of Individual Investors and had the opportunity to study at the New York Stock Exchange.

"I think it is extremely important to understand that because she was a shrewd investor and did an amazing amount of research, she understood these are endowments — they will go on forever, without end," Semrau said. "The (North Dakota) Challenge Grant was a real thrust for her to give like this."

Her generosity perhaps was only matched by her humble nature.

"She was so humble, she really wanted to minimize her own importance," Linrud said. "She was very private about her investing. Janis didn't insert herself into our plans — she had her thoughts and advice about what we were doing in the College of Business — but it was never confrontational. She really believed in helping the students and made sure to do that."

— Michael Linnell 



YEAR in review

2017
2018

Governor Burgum gives State of the State at Ann Nicole Nelson Hall



Governor Doug Burgum addressed North Dakota in his first-ever State of the State Address in front of a standing room only audience at Minot State University's Ann Nicole Nelson Hall. Along with the tour of MSU's campus, Burgum met with Minot State students, faculty, staff, and community leaders.



Minot State celebrates Northwest Arts Center grand opening April 19

Minot State University commemorated the completion of the new Northwest Arts Center, the Walter Piehl Gallery, and the Native American Artifact Collection. The grand opening exhibit, "Retrospective: Covering 1962-2018," is an overview of Piehl's work. The 6,730 square-foot facility is climate controlled, providing protection for MSU's permanent collections and artifacts. The Northwest Arts Center is located in the lower level of the Gordon B. Olson Library.



Torgunrud presents at Posters on the Hill

MSU student Jordan Torgunrud '18 was selected as one of just 60 students out of more than 400 submissions nationwide to present her undergraduate research at the 22nd Annual Posters on the Hill in Washington, D.C. The math and chemistry major presented her poster titled, "Scalable Synthesis of Novel Cancer-Preventing Agents."

**Torgunrud is also featured on the cover.*



Rudolph, Eull rise to the top

Minot State seniors Tyler Rudolph and Mitchell Eull capped off successful careers for the Beavers in 2017-18. Rudolph, named to three All-America teams, became the men's basketball program's all-time leading scorer and rebounder finishing with 1,987 points and 921 rebounds. Eull became the first MSU wrestler to win a NCAA Super Region title and the program's first All-American, placing sixth at the NCAA National Tournament. He finished 32-7 as a senior, breaking the school's record for wins with 94.



NDCPD awarded Administration for Community Living Core Grant



The North Dakota Center for Persons with Disabilities (NDCPD), a University Center of Excellence on Developmental Disabilities,

Education, Research and Service at Minot State University, was awarded a \$2.735 million grant from the Administration for Community Living (ACL). The grant will help address issues, find solutions, and advance research in order to improve the lives of people with developmental disabilities and their families. NDCPD will be awarded \$547,000 each year over the next five years.

Seasonal air-supported dome opens



Minot State University unveiled the air-supported dome at the Herb Parker Athletic Complex during an open house Jan. 10. Minot State honored those who made donations to the approximately \$2 million project. The City of Minot's Community Facilities Fund awarded \$1 million and another \$1 million was raised by the Minot State Development Foundation from private individuals, foundations, and local businesses. The 84,000 square foot air-supported dome will be open annually from November through April.

Minot State, Minot Area Community Foundation bring UNITY to Minot



Minot State University partnered with the Minot Area Community Foundation bringing the UNITY Project to campus during Homecoming 2017 week. The UNITY Project, an interactive public art project,

celebrated the uniqueness of individuals and raised awareness of how labels impact our perception and interactions with the world. UNITY is a circular arrangement of 32 poles in an outdoor area. Each pole is labeled with an identifier. With yarn, participants tied to each pole with which they identified creating a canopy of interconnectedness.

Deaf Education Program celebrates anniversary



The MSU Deaf Education Program celebrated its 55th anniversary with events during Homecoming 2017. "Celebrating Centuries in Deaf Education: Honor the Past - Inspire the Future" featured guest lectures, a symposium, reunion and was highlighted by Dr. I. King Jordan who gave a Community Presentation.

Minot State earns Star Volunteers Award

For the third straight year, Minot State University received the Star Volunteers Award from the Roosevelt Park Zoo. Minot State, over the past three years, has averaged 575



hours of volunteer work per year at the zoo.



Minot State unveils four-year renewable award

Minot State University announced the implementation of a newly created four-year renewable award beginning in the fall of 2018. Awards range from \$4,000 to \$12,000.

Minot State adds academic programs

- Bachelor of Science in Entrepreneurship
- Bachelor of Science in Early Childhood Education
- Minor in Fitness and Wellness Specialist
- Minor in Entrepreneurship
- Concentration in Humanities
- Concentration in Deaf Studies
- Concentration in Social Media
- Certificate in Cyber Security
- Certificate in Information Assurance
- Certificate in Cyber Security Management



President completes fall tour



Minot State University President Dr. Steven Shirley pictured here with Kenmare High School Principal Sarah Beckedahl '02, visited 40 area high schools, making stops at nearly every school within a two-hour radius. Visits included meetings with various high school superintendents, principals, counselors, teachers, and coaches.

Football tops St. Cloud State to end season, retains Battle of the Big Lake Trophy

In head coach Mike Aldrich's first season, Minot State finished on a high note, topping St. Cloud State 23-13 behind three interceptions — including two returned for touchdowns — from junior Kiante Goudeau in the Beavers first win over the Huskies since moving to NCAA Division II. The Beavers also retain possession of the Battle of the Big Lake Trophy by virtue of a 27-19 win over rival University of Mary. Minot State has won the rivalry game three straight seasons.



Frantsvog Academic Success Center opens



L to R: Randy Conway '92, Bryan Vibeto, Dean Frantsvog '97

Minot State University Athletics opened the Dean Frantsvog Academic Success Center in January. Named after current

Faculty Athletic Representative and Minot State accounting and finance professor, the center features a two-room complex within the MSU Dome with state-of-the-art technology, peer tutoring services, and a supervised study area. The center was made possible through the generosity of American Trust Center, United Community Bank of North Dakota, Vibeto Orthodontics, and Dean '97 and Sara (Christianson) '99 Frantsvog.

MSU Office of International Programs promotes Diversity Fair

The MSU Office of International Programs held its annual celebration of cultures from around the world. During the event, students shared an aspect of their home country or culture through colorful displays, photos, food, music, and performances.



DECA has strong showing at international conference



Fifteen Minot State University students traveled to Washington, D.C., to compete in the Collegiate DECA International Career Development Conference and eight individuals placed in the top 12.



Rumney earns North Dakota String Teachers Association Distinguished Service Award

Minot State University professor Jon Rumney received the North Dakota String Teachers Association Distinguished Service Award. The Distinguished Service Award is given for outstanding contributions to the cause of string education in the state of North Dakota.

YEAR in review

2017
2018

HLC Board of Trustees reaffirms MSU accreditation

The Higher Learning Commission (HLC) reaffirmed the accreditation of Minot State University following its June meeting of the HLC Board of Trustees.

Beavers capture first NSIC baseball title



Minot State swept University of Mary in the regular-season finale to clinch the program's first-ever Northern Sun Intercollegiate Conference title. MSU set a school record for wins in a season with 34.

MSU rededicates WWI Memorial

Minot State University honored two of its own fallen heroes with the planting of two new elm trees on campus and rededicated the World War I memorial in honor of Minot Normal School students Henry Finn and James Otis Cooper. Finn and Cooper gave their lives to the war effort.



MSU partners with Oregon Health and Science University to search for answers to meth addiction

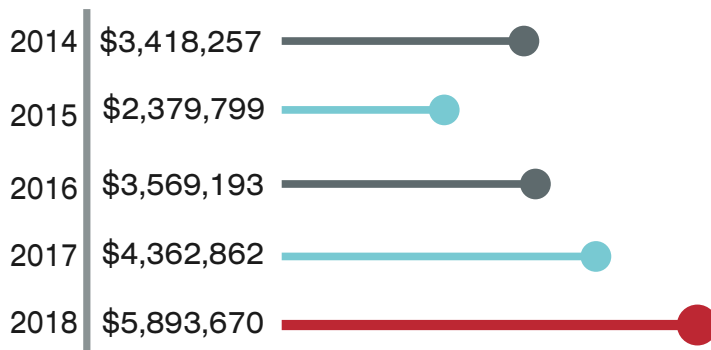
Biology students at Minot State partnered with Oregon Health and Science University on a research study to help find solutions to methamphetamine addiction. Oregon Health and Science University carries out the breeding schemes of mice, while Minot State researchers focus on the behavioral pharmacological component of the study.



2017-18 by the numbers

Minot State Development Foundation

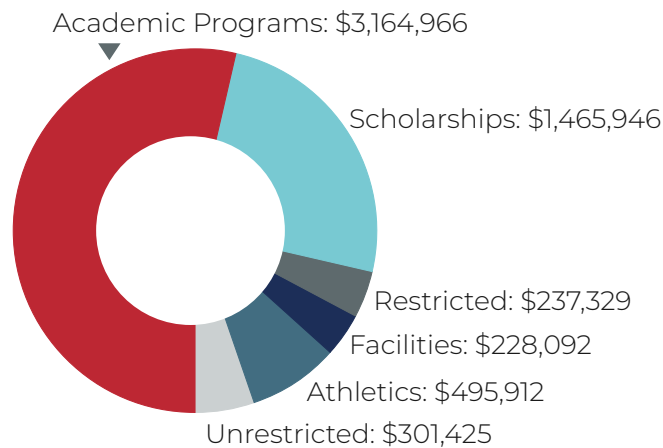
Total Support By All Donors



**2017-18
another
record
breaking
year!**

Donor Gift Designation Fiscal Year 2018

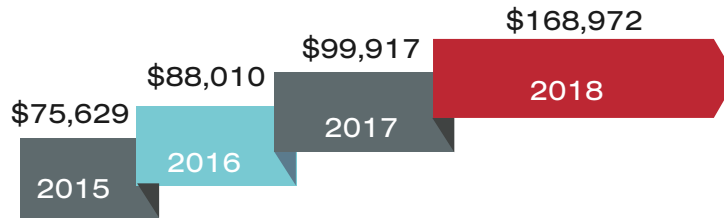
The \$5.8 million in total donor gifts were distributed among six university priorities.



Faculty and Staff Campaign

50%

of all faculty and staff support MSU financially.



Faculty and staff are making a difference, not just in what they do, but in the generosity they share in support of MSU's most urgent needs. In fiscal year 2018, 202 faculty and staff increased their overall giving by

69%

Growth of Endowed Funds Supports Scholarships and Programs

Endowed funds continued positive growth, reaching a total of 340.

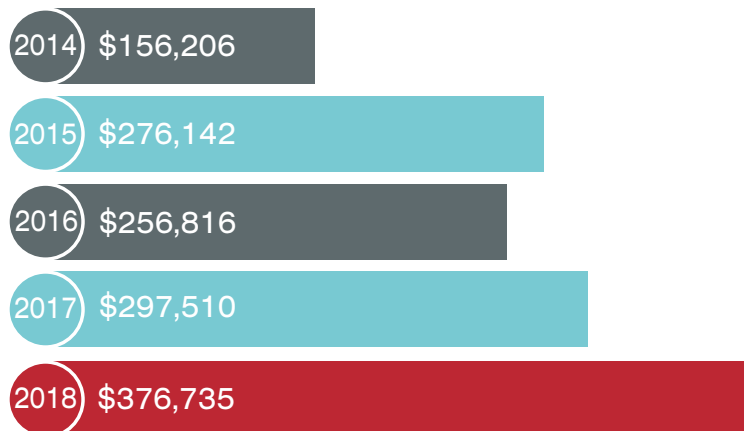
In fiscal year 2018, endowed funds provided \$1,052,568 in support of MSU, with 77% of the funds directly supporting student scholarships and academic programs.



768
ALUMNI DONORS

Annual Excellence Donations

Our Annual Excellence Appeal is critical to the support of the university.



Furthest gift
9,197 miles
BURNIE, AUSTRALIA

MINOT STATE'S FIRST-EVER

Giving Day

24 hours 445 donors

\$70,976 raised

464 gifts

361

were

\$100

or less

every gift matters!

84.4% of all gifts were made online

Gifts made from

28 states



118

faculty & staff donors

250

first time donors

first gift

12:11 AM



24 hours

last gift

11:57 PM



1.



3.



2.

APRIL 11th 2018

Minot State University's first-ever GIVING DAY a huge success!

The Minot State University Development Foundation's first-ever MSU Giving Day raised nearly \$71,000 in 24 hours, funding projects and scholarships.

The 24-hour, online day of giving back to the university featured 445 unique donors making gifts. Donor gifts, paired with matching funds, generated over \$130,000 for projects, departments, and scholarships.

"I want to thank everyone who participated in the first-ever Minot State Giving Day," MSU Foundation Executive Director Rick Hedberg said. "It was an exciting day for our department and for the university as a whole."

Nearly 50 projects received funding from donations on Giving Day, with the following completely or partially funded with proceeds from the event:

1. New state-of-the-art lighting for the start of the 53rd season of MSU Summer Theatre.
2. A new shooting machine for Minot State men's and women's basketball.
3. Travel expenses for Dr. Terry Eckmann's Group X and yoga students who this past year taught in the Mayan Riviera.
4. Treatwrite and Calipso software for Minot State's Communication Disorders department and clinic. The software helps move the department to electronic medical health and education record keeping for students within the clinic.

Giving Day also raised \$13,744 toward multiple scholarships at Minot State. ▽

Establishing a scholarship

Creating a named scholarship through the Minot State University Development Foundation assists students and leaves a legacy to Minot State University. It is also a meaningful way to honor family and friends.

The first step in establishing a scholarship is to determine whether you would like to establish an “endowed” scholarship or an “annual” scholarship:

- **Endowed Scholarships**


Endowed scholarship funds are designed to be permanent and perpetual and can be created with gifts totaling a minimum amount of \$10,000 contributed in full at the outset or with an initial commitment that is added to over time until the endowment level of \$10,000 is reached. The principal of the fund is invested to produce income, and an annual award is made to a student(s). The principal remains untouched, so the endowment can last into perpetuity.

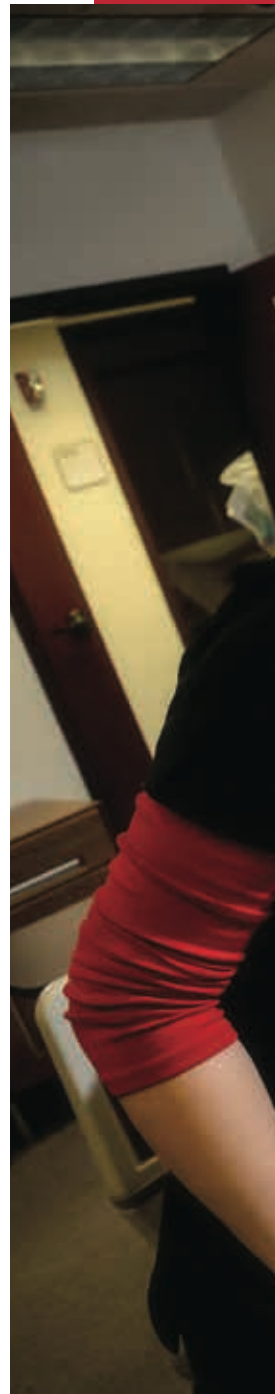
- **Annual Scholarships**

Annual scholarships can be established with an outright gift of any amount. Unlike an endowed scholarship, an annual scholarship is not a permanent fund and is awarded only as long as you (or others) choose to contribute to the fund.

As a scholarship donor, you choose the name of the scholarship as well as the criteria. The Office of Advancement staff is available to help you create the criteria for your scholarship. Endowed and annual scholarships at Minot State are awarded to deserving students based upon area of interest, geographical origin, leadership potential, merit, financial need, academic achievement or other criteria.

Typically, a selection committee carefully reviews the scholarship applications submitted by students and selects the most deserving recipient(s) based on the donor-established criteria.

Contributors of a scholarship fund are notified annually when the scholarship recipient(s) has been selected and are informed of the name, as well as the amount of the award. Recipients often write a thank you note to the donor, and in some cases, the recipient and donor are able to meet. 



Sydney Boyce

△ Minot, ND
Nursing



“
I love

being a part of the MSU nursing program. Your wonderful generosity allows me to focus on learning.”

Scholarships

COLLEGE OF ARTS AND SCIENCES

Arts and Science Scholarship Endowment

BIOLOGY

Randy and Pat Burckhard Scholarship Endowment
Rose Morgan Scholarship Endowment

CRIMINAL JUSTICE

Criminal Justice Scholarship Endowment
Dan Draovitch Scholarship Endowment
Gary Holum Scholarship Endowment

HUMANITIES

Art Scholarship Endowment
Division of Humanities Scholarship Endowment
Freshman Theatre Arts Award
Harold and Verna Aleshire Scholarship Endowment
Harvey and Arlone Twyman Scholarship
Helen Hoar Memorial French Scholarship Endowment
Minot State University Summer Theatre Scholarship Endowment
Myrtle Nordwick Cantana Scholarship Endowment
Vadell Family Scholarship Endowment

MATH AND COMPUTER SCIENCE

Agnes and Ray Ladendorf Scholarship Endowment
Blaine B. Kuist Memorial Scholarship Endowment
Erma Fahlgren Scholarship Endowment
Frank and Olga Bauman Scholarship Endowment
Gordon R. Olson Applied Math Scholarship Endowment
Integrity Viking Funds Computer Science Scholarship Endowment
Mary Buchwitz/Quandt Scholarship Endowment
Math and Computer Science Scholarship Endowment
Robert L. Holmen Scholarship Endowment
Xcel Energy Scholarship Endowment

MUSIC

Amstutz/Sundet Woodwinds Scholarship Endowment
Bert Skakoon Music Scholarship Endowment
Bert Skakoon Strings Scholarship Endowment
Dorothy Van Sickle Music Scholarship Endowment
Dr. Ira - Paul Schwarz Scholarship Endowment
Dr. Joseph M. and Jackie Hegstad Scholarship Endowment
Evelyn Sampson Music Scholarship Endowment
Frances Leach - Blanche Lynch Memorial Scholarship
Gary Stenehem Organ Scholarship Endowment
Gay Gidley King Scholarship Endowment
Gwenlyn Lawlar Scholarship Endowment
Harvey and Arlone Twyman Scholarship
Jeanne M. Sandberg Music Endowment
John and Ann Jermiason Scholarship Endowment
John and Patricia Strohm Music Scholarship Endowment
Kenneth and DeVera Bowles Voice Scholarship Endowment
Langemo Family Scholarship Endowment
Lyle C. Hanson Scholarship Endowment
Lynne and Jon Rumney Scholarship Endowment
Mary Lou Soukup Excellence in Music Education Scholarship Endowment
Mike Berg Scholarship Endowment
Minot Symphony Association Scholarship Endowment
Minot Symphony League Scholarship Endowment
Music Division Scholarship Endowment
Northwest International Music Festival Scholarship
Ralph Wallin Keyboard Scholarship Endowment
Robert O. "Red" Wuttke Scholarship Endowment
Ruth Schell Overholser Endowed Fellowship
Ruth Schell Overholser Scholarship Endowment
Sally Thomas Violin Scholarship Endowment
Stockman Sisters Music Scholarship Endowment

SCIENCE

Agnes and Ray Ladendorf Scholarship Endowment
Arts and Science Scholarship Endowment
Betty Iljana Scholarship Endowment
Blaine B. Kuist Memorial Scholarship Endowment
Bob and Pat Nelson Scholarship Endowment
Clinton and Adlyn Morgan Scholarship Endowment
Cyril Moore Scholarship Endowment
Division of Science Scholarship Endowment

Erma Fahlgren Scholarship Endowment
Frank and Olga Bauman Scholarship Endowment
Glenn Bonness Scholarship Endowment
Huldah Winsted Geology and Geography Scholarship Endowment
J. Spencer Overholser Scholarship Endowment
Kevin and Merri Jo Connole Scholarship Endowment
Mary Buchwitz/Quandt Scholarship Endowment
Meiers' Science Scholarship Endowment
Ruth and Charles Hoffman Botanical Scholarship Endowment
Xcel Energy Scholarship Endowment

SOCIAL SCIENCE

Dr. N.M. Lillehaugen History Scholarship Endowment
Frances Bane Crockett Scholarship Endowment
Merton and Karen Johnsrud Scholarship Endowment
Paul Morrison Scholarship Endowment
Social Science Division Scholarship Endowment
Virginia P. George Scholarship Endowment

COLLEGE OF BUSINESS

Aas Family Scholarship Endowment
Adelaide and Eleanor Johnson Scholarship Endowment
Ben and Theresa Wald Scholarship Endowment
Bremer Bank Scholarship
Burt and Gwen Traub College of Business Scholarship Endowment
Chris and Denise Lindbo Scholarship Endowment
Clint Severson and Conni Ahart Scholarship in memory of Mary Marley
College of Business Scholarship Endowment
College of Business Scholarship Endowment
Dacotah Bank Scholarship
Dale D. Atwood Scholarship Endowment
David and Dolly Gowan Scholarship Endowment
Don L. Barber Memorial Scholarship Endowment
Doris A. Slaaten Scholarship Endowment
Dr. Richard Schlapman Scholarship Endowment
E. James McIntyre Scholarship Endowment
Edson and Margaret Larson Scholarship
F. Bruce and Diane Walker Scholarship Endowment
First Western Bank & Trust Scholarship
Integrity Viking Funds Business Scholarship Endowment
J. Bernard Busse Scholarship Endowment
Jan Barlow College of Business Scholarship Endowment
John and Leslie Coughlin Scholarship Endowment
Lee Badertscher Memorial Scholarship Endowment
Magic City Networking Business Scholarship Endowment
Marilyn Joy Selland Scholarship Endowment
Marv and Barb Semrau Scholarship Endowment
Mary Buchwitz/Quandt Scholarship Endowment
Mel Hoover and Spencer Hoover Business Scholarship Endowment
Ove Jorgensen Merit Scholarship Endowment
Pat and Mary Kay Jones Scholarship Endowment
Peoples State Bank of Velva Scholarship Endowment
Peoples State Bank Scholarship
Randy and Pat Burckhard Scholarship Endowment
Richard L. Muus Business Scholarship Endowment
Robert and Ilze Sando Scholarship Endowment
Robert Torgerson Scholarship Endowment
Severson Entrepreneurship Scholarship Endowment
Seymour Tech Day Scholarship
Stephanie J. and Richard L. Strom Scholarship Endowment
Tim and Laura Mihalick Scholarship Endowment
Yvonne Schultz Scholarship Endowment

ACCOUNTING AND FINANCE

Accounting Scholarship Endowment
Brady Martz & Associates Scholarship
Dr. Richard C. Walker Scholarship Endowment
Janis Ann Dislevy Trust Endowed Scholarship
Pearl Stusrud Scholarship Endowment
Wells Fargo College of Business Scholarship

BUSINESS ADMINISTRATION

Luther and Diann (Witham) Hanson Scholarship Endowment

BUSINESS INFORMATION TECHNOLOGY

MSIS Scholarship Endowment
Roger Mergenthal Scholarship Endowment

COLLEGE OF EDUCATION AND HEALTH SCIENCES

ADDICTION STUDIES, PSYCHOLOGY AND SOCIAL WORK

Dr. Richard Sheldon Psychology and Addiction Counseling Scholarship Endowment
George Shipley Addiction Studies Scholarship Endowment
Jim Wahlberg Social Work Scholarship Endowment
Kay Erickson Memorial Scholarship Endowment
Sarah Martinsen Student Social Work Organization Scholarship
St. Joseph's Community Health Foundation

COMMUNICATION DISORDERS

Bob and Pat Nelson Communication Disorders Scholarship Endowment
Dr. David Williams Scholarship Endowment
Edna Gilbert Scholarship Endowment
Hearing and Training Center Scholarship Endowment
Lunday Scholarship Endowment
North Dakota Speech, Language and Hearing Association Scholarship Endowment
Sertoma Club of Minot Scholarship Endowment
St. Joseph's Community Health Foundation Scholarship
Susan Haanstra Elsom Memorial Scholarship Endowment
Terry and Ann Zeltinger Scholarship Endowment

NURSING

Randy and Holly Arneson Scholarship Endowment
Betsy Nokleby Scholarship Endowment
Betty Jean Halvorson Nursing Scholarship Endowment
Clarence M. Kringlee Scholarship Trust Fund
Dean's Award - Fabricius-Steinle Scholarship Endowment
Department of Nursing Alumni Scholarship Endowment
Dr. Elizabeth Ann Pross Scholarship Endowment
Dr. Richard E. Dormont, MD, Nursing Scholarship Endowment
Emma L. Misner Nursing Scholarship Endowment
Evelyn R. Nielsen Scholarship Endowment
Francis Vee Scholarship Endowment
Grace Fisher Nursing Scholarship Endowment
Gunnar Solberg Scholarship
Halvor and Orma Nesheim Nursing Scholarship Endowment
Hazel B. Berve Trust Scholarship
Helen Chatfield Shurr Scholarship Endowment
Janice Smith Nursing Scholarship Endowment
Jim and Karen Jensen Nursing Scholarship Endowment
Joan Love Christianson Nursing Scholarship Endowment
Keith and Elema Cunningham Scholarship Endowment
Leona R. Rubbelke Memorial Scholarship Endowment
Lois Bellet Williams Nursing Scholarship Endowment
Loretta F. Holub Nursing Scholarship Endowment
Maloney Educational Trust Scholarship
Margaret Bruce Scholarship
Mark Ronde Memorial Scholarship
Minot Moose Lodge Scholarship Endowment
Nels T. and Oline Blikre Scholarship Endowment
Otto R. and Irene E. Johnson Scholarship Endowment
Patrick Kelly Muus Memorial Nursing Scholarship Endowment
Patty Lou Pietsch Trzpuć Memorial Scholarship Endowment
Randy and Pat Burckhard Scholarship Endowment
Richard R. and Joyce Eckart Family Scholarship Endowment
Roger Drobash Nursing Education Scholarship Endowment
St. Joseph's Community Health Foundation Scholarship
Tracy Petersen Snyder Scholarship Endowment
William N. "Skip" Shirley Memorial Nursing Scholarship Endowment
Yvonne Falstad Hoover Nursing Scholarship Endowment

SPECIAL EDUCATION

Bane-Sather Scholarship Endowment
Elsie May Deeter Hearing Impaired Scholarship Endowment
Florence Lake Scholarship Endowment
Frances V. Leach Scholarship Endowment
Hooterville Flion Lions Edwin R. Hovrud Memorial Scholarship
Leann Erickson Special Education Scholarship
Michelle Kincheloe Tollefson Scholarship Endowment
Robert and Jo Ann Skabo Scholarship Endowment
Ruth E. Loucks Special Education Scholarship Endowment
Sertoma Club of Minot Scholarship Endowment
Special Education Scholarship Endowment

TEACHER EDUCATION AND HUMAN PERFORMANCE

Adelaide and Eleanor Johnson Scholarship Endowment
Bernadine H. Kunkel Scholarship Endowment
Don and Joyce Anderson Scholarship Endowment
Edith Carpenter Rose Scholarship Endowment
Elementary Education Scholarship Endowment

Gehard M. Halvorson and Marian Lund Halvorson Scholarship Endowment
George and Christine Hegstad Family Scholarship Endowment
Glenn Bonness Scholarship Endowment
Helen Gaheen Myhra Scholarship Endowment
Irene Snippen Nelson Scholarship
John F. and Veronica Grimes Scholarship Endowment
John Henry and Josephine Marie Huesers Scholarship Endowment
Judith Howard and Peter Hugret Educational Scholarship Endowment
Mabel Olsgaard Elementary Education Scholarship Endowment
Margaret Ann Brooks Memorial Scholarship Endowment
Marlys Haagenon Johnson Scholarship Endowment
Naomi E. Adams Scholarship Endowment
Nels T. and Oline Blikre Scholarship Endowment
Ole and Sarah Joraanstad Scholarship Endowment
Physical Education Academic Scholarship Endowment
Power of 1 Scholarship Endowment
Q Elementary Education Scholarship Endowment
Randy and Pat Burckhard Scholarship Endowment
Sandra (Koolmo) Dilland Scholarship Endowment
Stephanie J. and Richard L. Strom Future Teachers Academic Scholarship Endowment
The Olga Peterson Minot Model Alumni Association Scholarship
Wilhelmina Thompson Scholarship Endowment

GENERAL

Alumni Scholarship Endowment
Alvin and Shirley Dietz Scholarship Endowment
American Association of University Women Scholarship Endowment
Backes Family Scholarship Endowment
Beverly G. and Ruth Blowers Scholarship Endowment
Bobbie Williams Scholarship Endowment
Burger King Scholarship Endowment
Charles A. Wiley Memorial Scholarship Endowment
Dale and Vonnie Brown Scholarship Endowment
Dell M. Clarke Memorial Scholarship Endowment
Delta Epsilon Phi-Lucille Whitt Scholarship Endowment
Dr. and Mrs. C.P. Lura Scholarship Endowment
Dr. Joel A. Davy Memorial Scholarship Endowment
E.R. Manning Scholarship Endowment
Edith L. Barrett Memorial Scholarship Endowment
Emma S. Brynjolfson and Grace W. Brynjolfson Scholarship Endowment
Frank and Peggy Linha Scholarship Endowment
Galen Brown Scholarship Endowment
General David C. and Lois M. Jones Scholarship Endowment
Gertrude M. "Tillie" Eck Scholarship Endowment
Gordon B. Olson Scholarship Endowment
Grant and Ruth Norem Scholarship Endowment
Hazel McCulloch Scholarship Endowment
Howard Randall Scholarship Endowment
Hugh Family Scholarship Endowment
James A. Sjol Memorial Scholarship Endowment
Jeffrey Ruland Scholarship Endowment
Jerome Wrahlstad Memorial Scholarship Endowment
John and Ethel Score Scholarship Endowment
John and Lucille Decker Scholarship Endowment
June E. (Steinke) Votaw Scholarship Endowment
Kenneth G. and Frances L. Huso Scholarship Endowment
Kevin Michael Hill Scholarship Endowment
Lt. Col. Charles Drake Poole Scholarship Endowment
Marie Torgerson Scholarship Endowment
Mary Ann Walizer Scholarship Endowment
Minot Model Alumni Association Scholarship Endowment
Minot Quota Club Scholarship Endowment
Minot State University Scholarship Endowment
Minot State University Staff Senate Scholarship Endowment
Minot Young Professionals Network Scholarship Endowment
Montana Dakota Utilities Scholarship
Myron and Shirley Thompson Scholarship Endowment
ND Texas Hold'em Poker Championship Scholarship Endowment
NDCPD Access Scholarship Endowment
Nell E. Boozenny Sander Scholarship Endowment
Nels and Edna Solheim Scholarship Endowment
Norgard-Jensen Scholarship Endowment
Orvald J. Bjerken Scholarship Endowment
Oscar and Jean Quam Scholarship Endowment
Patricia (Trish) Hoeven Scholarship Endowment
Plum Valley Women's Scholarship Endowment
R.J. Doebler Family Memorial Scholarship
Ralph Hubbard Memorial Scholarship Endowment
Ray and Alice M. (Cooper) Hovey Memorial Scholarship Endowment
Ray and Ingeborg Atwood Memorial Scholarship Endowment
Richard and Sally Jenkins Scholarship Endowment
Robert and June Marsh Scholarship Endowment
Roger and Jeanette Christ Scholarship Endowment

Teresa and Darrel Loftesnes - Lofty Goals Scholarship Endowment
 The Brigadier General Jerome T. Hagen (RET.) Military Member
 Scholarship Endowment
 The Lund Scholarship Endowment
 The Native American Scholarship Endowment
 Theodore and Nan Monson Scholarship Endowment
 Tom and Mary Probst Family Scholarship Endowment
 Verendrye Electric Cooperative Scholarship Endowment
 Westlie Scholarship Endowment
 William Joseph Coming Hay Scholarship Endowment
 Women United Scholarship Endowment
 Women's Auxiliary American Legion Unit #26 Scholarship
 Wylie and Kathy Hammond Native American Scholarship Endowment

HONORS

Philip and Barbara Fallis Scholarship Endowment

ATHLETICS

Arnold "Arnie" Strebe Scholarship Endowment
 Aufforth/Marean/Coleman Scholarship Endowment
 Beaver Booster Athletic Scholarship Endowment
 Bert Leidholt Athletic Scholarship Endowment
 Clyde A. "Stretch" Nelson Scholarship Endowment
 Cole Altringer Scholarship Endowment
 Douglas G. Lockrem Memorial Scholarship Endowment
 Douglas J. Jaeger Memorial Basketball Scholarship Endowment
 George Kaczor Athletic Scholarship Endowment
 George Mellem Athletic Scholarship Endowment
 Hank Hettwer Scholarship Endowment
 Herb Parker - Parker Men Scholarship Endowment
 Jerome "Wheaties" Peterson Memorial Scholarship Endowment
 Jerry Meyer Scholarship Endowment
 Jim Thorpe Memorial Scholarship Endowment
 Kathy (Saylor) and Tim Peil Scholarship Endowment
 Ken Becker Athletic Scholarship Endowment
 Kevin and Leisa Harmon Scholarship Endowment
 L.M. "Bud" Funk Memorial Athletic Scholarship Endowment
 Larry Fiedler Scholarship Endowment
 M&S Concessions Athletic Scholarship
 McNally Family Scholarship Endowment
 Merle "Willie" Becker Scholarship Endowment
 MSU Athletic Hall of Fame Scholarship Endowment
 Randy Hedberg Athletic Scholarship Endowment
 Richard and Marlene Westlake Scholarship Endowment
 Robert Deardurff Scholarship Endowment



Rod and Happy Romine Scholarship Endowment
 Rotary Club of Minot Scholarship Endowment
 Vence Elgie Athletic Scholarship Endowment
 Wes Luther Athletic Scholarship Endowment
 Wiley Wilson Athletic Scholarship Endowment
 Zach Anderson Wrestling Scholarship Endowment

ACADEMIC PROGRAM ENDOWMENTS CENTER FOR EXTENDED LEARNING

Dr. Jerome Borgen Scholarship Endowment

COLLEGE OF ARTS AND SCIENCES

Janet M. Wentz Music, Theater and Art Memorial Endowment

Music

McFarland Auditorium Endowment
 The Theresa and Ben Wald Organ Preservation Endowment

Science

Bob and Kathy Mau Endowment
 Dr. Arnold Johnson Chemistry Equipment Memorial Endowment

COLLEGE OF BUSINESS

Bob and Kathy Mau Endowment
 College of Business Equipment and Furniture Endowment
 Doris A. Slaaten COB Student Development Endowment
 Joan Mattson Scholarship Endowment in memory of Kevin Mattson
 Roger Looyenga Leadership College of Business Endowment
 Severson Entrepreneurship Academy Endowment

COLLEGE OF EDUCATION AND HEALTH SCIENCES

Communication Disorders

Communication Disorders Endowment

Nursing

Mabel Meng Endowment

Special Education

Elsie May Deeter Endowment
 Special Education Department Endowment

NORTH DAKOTA CENTER FOR PERSONS WITH DISABILITIES

NDCPD Endowment

LIBRARY

Earth Science Library Endowment
 Esther M. Clausen Library Endowment
 Huldah Winsted Geology and Geography Library Development Fund
 Library Endowment
 Lola Carpenter Library Book Endowment

ALUMNI ASSOCIATION ENDOWMENTS

Alumni Special Projects Endowment

DEVELOPMENT FOUNDATION ENDOWMENTS

Orlin and Millie Backes Endowment

FACULTY ENDOWMENTS

COLLEGE OF ARTS AND SCIENCES

Wallace H. Stockman Social Science Faculty Development Endowment

COLLEGE OF BUSINESS

Janis A. Dislevy Endowed Chair
 JoAnn K. Linrud CoB Faculty Development Endowment
 Jubilee '88 Sabbatical Endowment

COLLEGE OF EDUCATION AND HEALTH SCIENCES

Deaf Program Faculty Development
 Medical Arts Clinic Foundation Scholarship Endowment

Donor Honor Roll

Alumni and friends continue to provide financial assistance through annual donations for Minot State University students and the university. These contributions are vital for a solid future for Minot State. Cash donations, endowments, gifts of property, bequests, annuities, and trusts are vehicles to match the dreams of our donors with the needs of our students. Gifts can be made conveniently at MinotStateU.edu/alumni or by contacting the Advancement Office at 701-858-4243 or 800-777-0750 ext. 4243.

LIFETIME HONOR ROLL OF DONORS

LEADER

\$1,000,000+
City of Minot
Elsie Mae Deeter Estate
Janis A. Dislevy*
David C. Jones*
NDUS Foundation
Clint Severson and Conni Ahart
Doris Slaaten
Chuck and Madge Westlie*
Robert O. Wuttke Estate

FOUNDER

\$500,000 - \$999,999
Bremer Bank
Gertrude Eck Estate
Loren and Melissa Holub
Gary and Jenette Nelson
Tom and Mary Probst
Xcel Energy/Xcel Energy Foundation

BENEFACTOR

\$250,000+
Glen Bonness*
Eric Clausen
Cognizant
Fisher Motors, Inc.
Roger and Ann Looyenga
Jim McIntyre
Minot Area Community Foundation
Rose M. Morgan*
Roger and Delores Odell*
Sertoma Club of Minot
St. Joseph's Community Health Foundation

CORNERSTONE

\$100,000+
Robert and Marilyn Anderson
Anonymous
Anonymous
Dell Clarke*
John D. and Lucille Decker*
Al and Shirley Dietz
R.J. Doebler Trust
First International Bank & Trust
First Western Bank & Trust
Fraternal Order of the Eagles #2376
Virginia H. Geesaman*
Martha Hansen*
Jack H. Hoeven*
Ted and Thelma Hugh*
Kenneth and Frances Huso Estate
I. Keating Furniture World, Inc.
Jim and Karen Jensen
Ove and Freddie Jorgensen*
Ardyth Kenner
Marian Kiehn*
Clarence Kringlee Estate
Bernadine Kunkel Estate
Edson and Margaret Larson Foundation
Tom and Frances Leach Foundation, Inc.
Frank and Agnes Linha*
Minot Elks Lodge No. 1089
Minot Public School District #1
Minot Symphony Association
MSU Alumni Association
Robert and Patricia Nelson
J. Spencer Overholser* and Ruth Schell-Overholser

David and Carla Reiten/Reiten
Television, Inc.
Leona Rubbelke Estate
Maynard and Jeanne* Sandberg
Robert and Ilze* Sando
Yvonne Schultz Trust
Robert and Jo Ann Skabo
Gunnar Solberg Trust
Richard and Stephanie Strom
Trinity Health
Don and Deb Wahus
Donna J. Weinrebe Trust
Nita Weinrebe Trust
Wells Fargo - Minot
Tom and Janet* Wentz Estate

BUILDER

\$50,000+
Don and Joyce Anderson
Anderson, Wade, & Whitty, PC
Donald and Carolyn Andrews
Jan L. Barlow
David and Myrna Blackstead
Brady Martz & Associates, PC
Ted and Joan Brinkman
Dale and Vonnie Brown
Lola Carpenter*
Doris L. Christensen Revocable Trust
John and Leslie Coughlin
Elsie Cunningham
John* and Marion Decker
Blaine and Kathy DesLauriers
Farstad Oil, Inc.
Grace J. Fisher
Louise E. Frazer*
Helene Fuld Health Trust
David and Nancy Fuller
David and Dolly Gowan
Grand Hotel
Marian A. Halvorson*
Gwen and William Howard Family Fund
Integrity Viking Funds
Investors Real Estate Trust
Jerome's Collision Center
Hester B. Johnson Trust
Gay G. King Estate
Agnes Kongsli Revocable Trust
Karen K. Krebsbach/Krebsbach Realty
Tyron Langager and Rita Curl-Langager
June Marsh Estate
Joan L. Mattson
Tim and Laura Mihalick
Minot Daily News
Minot Junior Golf Association
Minot Model Alumni Association
Nan W. Monson Estate
Montana Dakota Utilities
MSU Alumni Association Gaming
Kelly and Maria Nesheim
Mabel Olsgaard Estate
Prairie Partners
Ray Rude*
Evelyn Sampson Estate
Nell E. Sander
Agnes G. Shurr
Edna M. Solheim
Mary Lou Soukup
SRT Communications, Inc.
Tom and Judy Swanson
The Heritage Singers

Robert K. Torgerson
Harvey and Arlone Twyman Trust
United Community Bank of North Dakota
US Bank of Minot
Dorothy A. Van Sickle
Ben* and Theresa Wald
Gordon H. Westlie*
James Westlie

OLD MAIN

\$15,000+
Lynn W. Aas
David and Kathy Aas
Naomi E. Adams Trust
Harold and Verna Aleshire*
Jay and Dyanne Altringer
American Trust Center
American Legion
Bucky and Linda Anderson
Rory and Toni Anderson
Anonymous
Jon and Karla Backes
Orlin and Millie Backes*
John and Marilyn Barrett*
Rick and Linda Beall
Lenny and Karen Behm
Orvald J. Bjerken Estate
Duane and Jeanne Brekke
Mary Ann Brosnahan Estate
Margaret Bruce Estate
Frank and Val Bruels
Grace Brynjolfson Estate
Randy and Pat Burkhard
Rich and Vicky Campbell
Myrtle N. Canata Trust
Catherine Carlson
Bill and Diana Christianson
Coca-Cola Bottling Company West, Inc.
Shirley Cole-Harding
Kevin and Merri Jo* Connole
Charles D. Cunningham
Dacotah Bank
DAV-Trench Rat Dugout #456
Daniel R. Delaney
Delta Epsilon Phi-Lucille Whitt Scholarship Endowment
David and Myrna DeMers
Gerald Dilland
Don Besette Motors, Inc.
Wallace* and Iris Eckmann
Eide Bailly LLP
Larry and Holly Eidsness/Northwest Building Improvement
Vence* and Donna Elgie
Mike and Tammy Elgie
Enbridge Pipelines ND
Erma Fahlgren Estate
Dean and Sara Frantsvog
Don C. Gackle*
Mike and Kathy Gaddie/Ryan Family Dealerships, Inc.
Matt and DelRae Geinert
Virginia J. George*
Great Tomato Festival
Vernon and Marlene Haddeland
Donald Haga
Luther and Diann Hanson
Lyle C. Hanson Estate
Kevin and Leisa Harmon
Harry's Tire Service

Jerome A. Harstad
Brynhild Haugland*
Rick and Andrea Hedberg
Shirley Hintz
Marita B. Hoffart
Holiday Inn
Mel and Yvonne Hoover
Spencer D. Hoover
Gary and Carol Hovdestad
Richard Hovey*
Howard D. Huesers*
Peter Hugret and Judith Howard
Don and Sherry Hummel/Burger King
Betty L. Iljana*
Investors Management & Marketing, Inc.
Lane R. Jacobson
Douglas J. Jaeger Estate
Sherry E. Jensen
John and Ann Jermiason
JLG Architects
Adelaide Johnson
Ken and Marcia Johnson
Marlys E. Johnson
Sharon R. Johnson
Merton and Karen Johnrud
Paul and Patricia Kaald
Marilyn Kemper*
Kiwans Club of Minot
Howard and Melanie Klug
KMOT-TV
William A. Koering
Gene and Judy Krebs
Glendon M. Kriese*
Florence Lake Estate
Doris M. Langager*
Dan and Jeri Langemo
Mervyn C. Leathers Estate
Chris and Denise Lindbo
JoAnn K. Linrud
Darrel and Teresa Loftesnes
Ruth E. Loucks Estate
Lowe's Printing, Inc.
Mike and Nancy Lucy
Ida B. Luedke*
Arnold Lund Family
Wes and Donna Luther
Mabel and Ethel Maloney Education Trust
Claude and Gwenlyn Marsh
Baldwin and Shirley Martz*
Mattson Construction Co.
Robert and Kathy Mau
McGee, Hankla & Backes, PC
Patrick and Arlene* McNally
Medical Arts Clinic
Medical Arts Educational & Scientific Foundation
Gayne and Barbara Meiers
Jeff and Peggy Miller
Minot Banking Association
Minot Country Club
Minot Lions Club
Minot Moose Lodge No. 822
Minot Paving Co., Inc.
Minot Restaurant Supply
Monarch Products Company
Jim and Kim Montgomery
MSI, Inc.
Richard and Bernie Muus
Tom and Gloria Myhra*
Mark and Noel Nesheim

Kaitlyn Hill

△ Minot, ND
Athletic Training
Corporate Fitness

“
Thanks

to your generosity, I am able to achieve success in the classroom as well as participate in campus activities.”

Paul Ness
Newman Signs, Inc.
John and Cheryl Nilsen
North Dakota Community Foundation
North Hill Bowl
Northwest Mutual Foundation
Northwest Sporting Goods
Odell, Wentz & Associates
Gordon R. Olson
Gordon and Carley Olson*
Tim and Kathy Peil
Lawrence and Vida Mae Petersen
Planet Pizza/Fred and Mary Mueller

Mary B. Quandt
John M. Quie
Harold and Diana Randall
Harold R. and Margaret I. Robinson*
Milt and Bonnie Rolle
Rod and Happy* Romine
Rotary Club of Minot
Scott and Trudy Ruland
Richard Saunders*
Dave R. Schmitz
Mark and Carol Schnabel
Brian L. Selland
Mark A. Selland

Paula J. Selland
Marv and Barb Semrau
H. Erik and Jane Shaar
Steven and Jennifer Shirley
Joe and Nancy Siefried
Signal Realty, Inc.
Sleep Inn & Suites
Darryl and Kathy Smette
Ted and Anna Solheim*
Roger and Marlene Sorenson
Dale Spartz and Shelley Erickson
Jock* and Lacey Stevick
John and Jodi Stewart

Arnie and Sigrid Strebe
Al and Marjorie Strong*
Charlotte L. Thiemecke-Floyd
Myron and Shirley Thompson
Thompson-Larson Funeral Home
Roger and Michelle Tollefson
Tollefson's Retail Group
Arne and Margaret Totdahl
Town & Country Credit Union
Burton and Gwendolyn Traub
United Insurance Agency
United Technologies
Verendrye Electric Coop.

Visit Minot
F. Bruce and Diane Walker
Richard and Shirley Walker

Alice Warner
Western ND Golf, Inc.
Richard and Marlene* Westlake

Westlie Motor Co.
Gary* and Kim Weydahl
James and Connie Williams

Lorraine J. Willoughby
Ruth Parker-Wood

*Deceased

LEGACY SOCIETY

The Minot State University Legacy Society recognizes the thoughtful generosity of those who have made a planned gift to the MSU Development Foundation to benefit Minot State University. Membership is open to anyone making a deferred or a planned gift, such as bequests, charitable trusts, charitable gift annuities, and life insurance.

Mary A. Anderson•
Donald & Carolyn Andrews
Randy & Holly Arneson
David & Myrna Blackstead
Ted & Joan Brinkman
Eric Clausen
Virginia M. Coughlin*
John D. Decker*
Elsie May Deeter*•
Janis A. Dislevy*
Gertrude Eck*•
Grace Fisher
Ruth N. Fossum*
Don C. Gackle*

Virginia H. Geesaman*
Martha Hansen*•
Ryan and Barb Henry
Shirley Hintz
Jack Hoeven*
James and Evelyn Horne*
Gary and Carol Hovdestad•
Genevieve W. Hutmacher•
Betty Iljana*
Douglas J. Jaeger*
Ken and Judi Kitzman•
Glendon M. Kriese*
Dan and Jeri Langemo

Neil and Jean Lasley•
Frank and Peggy Linha*•
Claude and Gwenlyn Marsh
Barbara A. Myhre•
Robert and Patricia Nelson
J. Spencer Overholzer*• and Ruth
Schell-Overholzer•
Mary B. Quandt
Clayton Rein
Rod and Happy* Romine
Maynard and Jeanne* Sandberg
Nell E. Sander
Robert and Ilze* Sando

Yvonne Schultz*
Marv and Barb Semrau
Robert and Jo Ann Skabo
Doris Slaaten•
Edna M. Solheim*
Mary Lou Soukup•
Al and Marjorie Strong*
Basil C. Talley
Alice Warner*
Donna J. Weinrebe*
Nita Winrebe*
Chuck and Madge Westlie*
Donald L. Wilhelm*

• Charter Members * Deceased

PRESIDENT'S CLUB

Since 2008, Minot State University has recognized its most generous annual donors by welcoming them into the President's Club. Membership in the President's Club is open to all donors making annual contributions totaling \$1,000 or more to any area of campus.

INDIVIDUALS

Lynn W. Aas
Mike and Kristen Aldrich
Beverly A. Alex
Jay and Dyanne Altringer
Bucky and Linda Anderson
Don and Joyce Anderson
Donald and Carolyn Andrews
Anonymous
Anonymous
Anonymous
Randy and Holly Arneson
Jon and Karla Backes
Roger L. Backes
Edward W. Baker
Larry and Deborah Baklenko
Diane M. Barber
Janice L. Barlow
Chuck and Leslie Barney
Richard and Linda Beall
Doug and Patti Bengson
Mary Lou Bertsch
David and Myrna Blackstead
Steve and Barb Blikre
Kevin and Dione Bohl
Jody and Lori Braasch
Duane and Jeanne Brekke
John M. Brey
Ted and Joan Brinkman
Frank and Val Bruels
Christopher Brunkhorst
John B. Buchwitz
Randy and Pat Burckhard
Courtenay N. Burckhard
Zach and Lindsey Burdick
Donald J. Busek
Nancy C. Cain Sommers
Rich and Vicky Campbell
Catherine Carlson
Andrew and Rena Carter
Gary and Theresa Cederstrom
Daniel and Tracy Christen
Bruce and Linda Christianson
Eric Clausen
Jim Clute and Sherlene Nelson
Shirley Cole-Harding
Dana L. Cordova
John and Leslie Coughlin
Charles D. Cunningham

Brent and Carol Danks
Josh and Kayla Dascher
Conrad and Karen Davidson
Scott G. Delorme
Blaine and Kathy DesLauriers
Brock and Elly Deslauriers
David and Marsha DesLauriers
Al and Shirley Dietz
Rilie and Nicci Domres
Joyce I. Eckart
Jerry A. Elberg
Leann K. Erickson
Jeremy and Jade Feller
Grace J. Fisher
Greg and Nancy Fjeld
Lynn and Dawn Forde
Wayne and Brenda Foster
Dean and Sara Frantsvog
Thomas and Judy Fredericks
David and Nancy Fuller
Eric Ganes
Larry and Karen Gehring
Matt and DelRae Geinert
Dusty and Laurie Geller
Jason and Heather Gillihan
Patrick and Risa Glover
Gary and Judith Gottschalk
Dave and Dolly Gowan
Andrew S. Gudmunson
Erik and Julie Haas
Vernon and Marlene Haddeland
Connie R. Hagen
Travis and Brenda Halvorson
Luther and Diann Hanson
Jerome A. Harstad
Kelly and Roxann Hayhurst
Rick and Andrea Hedberg
Jackie A. Hegstad
Gail Heller
David A. Henderson
Timothy D. Henry
Ronald and Donna Hensen
Michael and Joan Hill
Terry and Gail Hjelmstad
Jack H. Hoeven*
Robert and Karen Holmen
Thomas G. Holum
Gwen M. Howard
Peter Hugret and Judith Howard

Wendy A. Howe
Mike and Deb Jensen
John and Ann Jermiason
Adelaide Johnson
Sharon R. Johnson
Merton and Karen Johnsrud
Pat and Mary Kay Jones
Shane and Tara Jordan
Paul and Patricia Kaald
Steven and Carol Kettler
Kent and Chelsea Kirkhammer
David and Courtney Kivett
William A. Koering
John and Peggy Korf
Blaine Kotasek
Patrick and Dianne Kraft
Karen K. Krebsbach
Tyrone Langager and Rita Curl-Langager
Dan and Jeri Langemo
Andrew and Teal Leraas
Pat and Jackie Limke
JoAnn K. Linrud
Darrel and Teresa Loftesnes
Hugh and Deeann Long
Roger and Ann Looyenga
Mike and Nancy Lucy
Karen L. Lund
Audrey Lunday
Jay and Jacie Lundeen
Wes and Donna Luther
Dale and Kay Mattern
Claude and Gwenlyn Marsh
Todd and Janet Mathistad
Douglas L. Mattson
Joan L. Mattson
Devin McCall
Jim McIntyre
Wendy S. McManus
Patrick W. McNally
Tami J. McNally
Gayne and Barbara Meiers
Stu Melby and Karen Pocha-Melby
Tim and Laura Mihalick
Henry and Sharon Milkey
Jeff and Peggy Miller
Mike Miller
Jim and Kim Montgomery
Margaret A. Moore
Matthew P. Murken

Tom Myhra*
Robert and Patricia Nelson
Thor and Jessica Nelson
Kelly and Maria Nesheim
Mark and Noel Nesheim
John and Cheryl Nilsen
Jack and Colette Nybakken
Dwight and Lana Olson
Perry and Melissa Olson
Kyle M. Pankratz
Tim and Kathy Peil
Steven Pinnow
Tom and Mary Probst
William and Ginger Quam
Mary B. Quandt
John M. Quie
Harold and Diana Randall
Jacqueline L. Reep-Jarmin
David and Carla Reiten
Jeffrey and Tammy Risk
Neil and Amy Roberts
Dale and Nicola Roed
Douglas J. Rolfsen
Lowell and Carole Romfo
Rod L. Romine
Scott and Linda Ross
Jim and Verla Rostad
Scott and Trudy Ruland
Maynard H. Sandberg
Nell E. Sander
Robert Sando
Monty and Tori Schaefer
Dave R. Schmitz
Edward and Linda Schnaible
Deborah R. Schultz
Brian L. Selland
Mark A. Selland
Paula J. Selland
Marv and Barb Semrau
Clint Severson and Conni Ahart
Tom and Anita Seymour
Steven and Jennifer Shirley
Shilo and Deanna Shumway
Joe and Nancy Siefried
Larry and Patty Silver
Robert and Jo Ann Skabo
Don and Betty Skari
Doris Slaaten
Kerwin and Wendy Sletto

Darryl and Kathy Smette
 Paul and Jacqueline Soderberg
 Mary Lou Soukup
 Jason and Catherine Spain
 Dale Spartz and Shelley Erickson
 Ryan and Karina Stander
 Jock* and Lacey Stevick
 Arnold and Sigrid Strebe
 Richard and Stephanie Strom
 Terry and Lynne Summers
 Steven J. Swenson
 Brock and Tiffany Teets
 Gary and Connie Tharaldson
 John and Karen Theisen
 Myron and Shirley Thompson
 Roger and Michelle Tollefson
 Robert K. Torgerson
 Arne and Margaret Totdahl
 Burton and Gwendolyn Traub
 Darrik and Betsy Trudell
 Don and Bonnie Trueblood
 Greg and Nancy Tschetter
 Curtis and Irva Undlin
 Todd and Heidi Van Dusen
 Darwin Van Dyke
 Alan J. VanDelinder
 Bryan and Amber Vibeto
 Kevin and Carla Vigested
 Jason and Alana Vollmer
 Larry and Edwina Wahlund
 Don and Deb Wahus

Terry and Doreen Wald
 F. Bruce and Diane Walker, Jr.
 Richard and Shirley Walker
 Angela D. Weir
 Brock and Glenda Weppler
 Richard K. Westlake
 Kim R. Weydahl
 Pat and ReNae Wheeler
 Keith and Pat White
 Lorraine J. Willoughby
 Jack and Suzanne Wilson
 Brent and Shelley Winiger
 Chad and Kirsten Wolsky
 Kevin and Renae Yale
 Terry and Ann Zeltinger
 Michael and Kristine Zimmer
 Jason and Dusty Zimmerman

*Deceased

ORGANIZATIONS

Allstate Insurance - Kim Albert Agency
 American Trust Center
 American Legion Auxiliary Unit 26
 Brady Martz & Associates, PC
 Bremer Bank
 Clean Tech
 Clear Channel
 CrossFit Minot, Inc.
 Dacotah Bank

Dakota Dental Health Center
 Edson and Margaret Larson Foundation
 Enbridge Pipelines ND
 Farstad Oil, Inc.
 First International Bank & Trust
 First Western Bank & Trust
 Gate City Bank
 Goudy Transport
 Hampton Inn and Suites Minot Airport
 Harley's Arrowhead, Inc.
 Hess Corporation
 Homesteaders Restaurant
 I. Keating, Inc.
 Integrity Viking Funds
 Investors Real Estate Trust
 Jerome's Collision Center
 Jim Artz Insurance
 JLG Architects
 Johnson Eyecare and Eyewear
 Kenmare and Parshall Dental Clinic
 Lowe's Printing, Inc.
 Magic City Beverage
 Marketplace Foods
 Maxson Law Office, PC
 McGee, Hankla & Backes, PC
 Minot Junior Golf Association
 Minot Juniors Volleyball
 Minot Model Alumni Association
 Minot Restaurant Supply
 Minot Soccer Association
 Minot Symphony Association
 Minot Wrestling Booster Club

Minot Young Professionals
 Montana Dakota Utilities
 MSU Alumni Association
 MSU Alumni Association Gaming
 MSU Campus Players
 Newman Signs, Inc.
 Northern Plains Inn
 Northwest Building Improvement
 Papa Murphy's
 Peoples State Bank
 Power of 1
 Premier Chiropractic
 Rasmuson Law Office
 Rockstar Real Estate, Inc.
 Ryan Family Dealerships, Inc.
 Sertoma Club of Minot
 Sleep Inn & Suites
 Souris Valley United Way
 SRT Communications, Inc.
 St. Joseph's Community Health Foundation
 The Heritage Singers
 Tires Plus
 Tollefson's Retail Group
 Tom and Frances Leach Foundation, Inc.
 Town & Country Credit Union
 Town & Country Insurance Agency, LLC
 United Community Bank of North Dakota
 Universal Athletic
 Valley Sport & Marine
 Vardon Golf Club
 Wells Fargo-Minot
 Western ND Golf, Inc.
 Xcel Energy

MSU EMPLOYEES

Michael J. Aldrich
 Sarah L. Aleshire
 Beverly A. Alex
 Dianna M. Anderson
 J. Erik Anderson
 Jennifer R. Anderson
 Sean Arbaut
 Amy B. Armstrong
 Brent A. Askvig
 Judy Bacon
 Joan L. Banister
 Stephen T. Banister
 Chuck Barney
 Lindsey M. Benson
 Kristi L. Berg
 Tawnya N. Bernsdorf
 Lynda K. Bertsch
 Ann M. Beste-Guldborg
 Micah C. Bloom
 Lisa Bordon-King
 Lori L. Braasch
 Penny S. Brandt
 Paul D. Brekke
 Deborah A. Brothers
 Christopher Brunkhorst
 Karen J. Brunner-Wright
 Hasan Buker
 Courtenay N. Burckhard
 Melissa S. Cantone
 Andrew V. Carter
 Wojciech Cebulak
 Shirley Cole-Harding
 Daniel Conn
 Linda D. Conn
 Dana L. Cordova
 Linda M. Cresap
 Tonya R. Critz
 Joe N. Dale
 Dana M. Dannewitz
 Conrad E. Davidson
 Mark Del Monaco
 Alexandra Deufel
 Renee L. Duncan
 Terry F. Eckmann
 Derek T. Edholm
 Julianne M. Eklund
 Scott J. Eul

Jeremy D. Feller
 Melissa A. Fettig
 Stacy N. Flaten
 Evan J. Forde
 Amanda C. Francis
 David A. Frantsvog
 Dean A. Frantsvog
 Sara K. Frantsvog
 Neil S. Fulton
 Lori J. Garnes
 Laurie K. Geller
 Janet L. Gerken
 Constance J. Geyer
 Cynthia F. Geyer
 Heather L. Golly
 Deanna K. Gotvaslee
 Mark D. Graupe
 Sean Griffin
 Alysha M. Grosse
 Shanette R. Haarsager
 Catherine M. Haarstad
 Linda L. Haider
 Heather M. Halverson
 Brenda L. Halvorson
 William C. Harbort
 Marlene M. Hargrave
 Kevin S. Harmon
 Leisa L. Harmon
 Celeste Hauser
 Rick J. Hedberg
 Richard P. Heit
 Andy J. Heitkamp
 Debbie J. Heitkamp
 Sarah C. Henderson
 Jill E. Hieb
 Kathryn M. Hintz
 Jane Hirst
 Thea M. Holm
 Karen K. Holmen
 Erin M. Holt
 Tricia B. Houmann
 Anton A. Heuther
 Korie Huettl
 Aaron J. Hughes
 Mary E. Huston
 Jennifer R. Hutchins
 Teasha Jackson

Joseph C. Jastrzembski
 Debra L. Jensen
 Kimberly Johnson
 Erik Kana
 Scott A. Kast
 Maglyn Keeney
 Julie R. Keller
 Jacob C. Kettler
 Robert E. Kibler
 Kathryn C. Kilroy
 Deborah M. Kinzell
 David W. Kivett
 Cheryl A. Kremer
 Cole J. Krueger
 Kevin L. Kvale
 Shane E. LaDage
 Daniel B. Langemo
 Sheila J. Latham
 Corrina D. Lemer
 Paul W. Lepp
 Michael G. Linnell
 Penny A. Lipsey
 T.J. Lipsey
 Teresa M. Loftesnes
 Susan B. Mack
 Linda R. Madsen
 Lesley Magnus
 Holly L. Major
 Kelli A. Marchand
 Beth Marschner
 Kate D. Marshall
 Heather L. Martin
 Tracey Y. Mays
 Roger McAfee
 Devin McCall
 Janna L. McKechnie
 Wendy S. McManus
 Stuart A. Melby
 Mary E. Mercer
 Vicki J. Michels
 Nancy L. Mickelson
 Jolina M. Miller
 Timothy L. Morris
 Scott M. Muhle
 Brenda L. Munson
 Matthew P. Murken
 Jolene K. Nepochipenko

Cheryl E. Nilsen
 Nicholas A. Nissen
 Anne M. Nordgaard
 Beth A. Odahlen
 Heidi J. Okeson
 Cari A. Olson
 Darren J. Olson
 Deborah J. Olson
 Linda A. Olson
 Gary W. Orluck
 Jolene M. Orluck
 Kyle D. Patterson
 Christina G. Paxman
 Leon M. Perzinski
 Douglas A. Pfliger
 Walter Piehl
 Diane S. Pierson
 Ernst Pijning
 Gary A. Rabe
 Jacqueline L. Reep-Jarmin
 Jan L. Repnow
 Daniel M. Ringrose
 Amy E. Roberts
 Neil B. Roberts
 Nicola J. Roed
 Gary J. Ross
 Lisa M. Roteliuk
 Melissa A. Rowe
 Mindy S. Rudnick
 Eileen Savelkoul
 Linda M. Schaefer
 Neil G. Scharpe
 Robert Schlaeger
 Kari L. Schmidt
 Toni D. Schwartz
 Margaret E. Sherve
 Steven W. Shirley
 Celeste D. Simmons
 Aili M. Smith
 Mary K. Smith
 Eileen Solberg
 Jason R. Spain
 Melissa J. Spelchen
 Karina Stander
 Ryan Stander
 Heidi J. Super
 Judith Swanson

Steven J. Swenson
Nicole C. Thom-Arens
Douglas M. Tiedman
Kimberly A. Tiedman
Bonnie R. Trueblood
Katherine M. Tyler
Marc Wachtfogel

Robin M. Wagner
Jay L. Wahlund
Doreen L. Wald
Terry J. Wald
Gary W. Walhaug
Michael J. Wardzinski
Kristen M. Warmoth

Jonelle G. Watson
Rick H. Watson
Laurie E. Weber
Darla W. Weigel
Deb J. Wentz
Brock N. Weppler
Susan K. Weston

Sara E. Wiedmaier
Lori J. Willoughby
Brent N. Winiger
ZoeAnn B. Winkler
George C. Withus
Tammy J. Wolf
Renae A. Yale

BEAVER BOOSTERS

INDIVIDUALS

Bev Alex
Mike and Kristen Aldrich
Donald and Joyce Anderson
Duane and Colleen Anderson
Les and Debbie Anderson
Brent and Stacy Askvig
Dean and Norma Bachmeier
Orlin Backes*
Roger Backes
Ed Baker
Larry and Debbie Baklenko
Larry and Caren Barnett
Charles and Leslie Barney
Paul and Marcy Beck
Keith and Judy Bjornson
Steve and Barb Blikre
Duane and Jeanne Brekke
Bruce Bremer
John Brey
Ted Brinkman
Dan and Jennie Brizee
Frank and Val Bruels
Chris Brunkhorst
Courtenay Burckhard
Kevin Burckhard
Zach and Lindsey Burdick
Rich and Vicky Campbell
Kurt Carlson
Andy and Rena Carter
Gary Cederstrom
Tom and Lynne Christen
Charles and Kendra Colby
Dana Cordova
Larry and Penny Cunha
Joe and Kaylee Dale
Brent and Carol Danks
Josh and Kayla Dascher
Blaine and Kathy DesLauriers
Brock and Elly DesLauriers
John and Rita Doering
Rilie and Nicci Domres
Terry Eckmann
Derek and Kari Edholm
Celesta Edwards
Kelly and Lisa Egl
Jerry Elberg
Mike Elgie
Scott Eul
Evan Forde
Dusty Forthun
Duane and Carol Foss
Dean and Sara Frantsvog
Robert Frantsvog
Dale and Ann Gehring
Mike Gessner
Jason and Heather Gillihan
Risa Glover
David and Dolly Gowan
Mark Graupe
Sean Griffin
Travis and Brenda Halvorson
Wally and Winnie Hankla
Jerome Harstad
Kelly and Roxann Hayhurst
Zoe Ann Parker Healy
Rick and Andrea Hedberg
Andy and Deb Heitkamp
Dennis and Marvel Helgeson
Ronald and Donna Hensen
Clint and Renee Hermanson
Jerry Hoiland
Bob and Karen Holmen

Robert and Pat Holmen
Brian and Janet Hornecker
Lloyd and Ellen Hornbacher
Gary and Carol Hovdestad
Steven Hunter
Jeff and Cheri Hurd
Paul Isaacson
Randy Johnson
Pat and Mary Kay Jones
Harvey Keeney
Jake Kettler
Kent and Chelsea Kirkhammer
David and Courtney Kivett
Bill Koering
Ken and Fran Kostad
Blaine Kotasek
Tony and Marla Kulig
Lloyd Kvam
Ron LaCount
Shane and Micki LaDage
Carl and Jennifer Lade
Chris and Rachelle Lamoureux
Patrick Landsiedel

Jack and Collette Nybakken
Jerry and Christy Obenauer
Dale and Teresa Olson
Melissa Olson
Herb and Vangie Parker
Bernie Pellenwessel
John and Lesley Phillips
Chris and Shawna Poitra
Connie Portscheller
Mark Rasmuson
Kenneth and Debra Reinke
Ben Robers
Rod Romine
Scott and Linda Ross
Bob Sando
Clint Schaeffer
Eric and Stacy Schaeffer
Bob Schempp
Marv and Barb Semrau
Dave and Jean Senger
Vasily Shipunov
Steven and Jennifer Shirley
Mike and Marie Sidener



Dan and Jeri Langemo
Alice G. Leonard
Paul Lepp
Andy and Teal Leraas
Gary and Sherry Leslie
Dick and Jean Limke
Pat and Jackie Limke
Michael and Nichole Linnell
Darrel and Teresa Loftnesnes
Hugh Long
Travis and Lindsay Lookk
Dale and Cindy Ludwig
Tyler and Clarissa Lundy
Wes and Donna Luther
Cory Maclver
Lance and Amy Makeeff
Dan Marler
Merlin and Joannie Martin
Dale and Kay Mattern
Doug Mattson and Penny Miller
Roger McAfee
Jim McIntyre
Wendy McManus
Chad, Shaley, and Regan McNally
Pat McNally
Stu and Karen Melby
Roger Mergenthal
Tim and Laura Mihalick
Henry and Sharon Milkey
Wendel and Donna Mongeon
Melanie Moore
Matt Murken
Jeff Nelson
Cheryl Nilsen
Nicholas Nissen

Joe and Nancy Siefried
Larry Silver
Don and Betty Skari
Pat and Liz Slotsve
Jason and Catherine Spain
Melissa Spelchen
Jock* and Lacey Stevick
Roscoe Streyle
Rob Sumlin
Terry and Lynne Summers
Bob and Linda Sundberg
Steven Swenson
Michael and Kristi Toy
Darrik and Betsy Trudell
Curtis and Irva Urdlin
Dallas and Carrie Varty
Larry and Edwina Wahlund
Gary and Arlene Walhaug
DuWayne and Karen Walz
Mark and Jocelyn Wax
David and Laurie Weber
Sara Weidmaier
Dwight and Deb Wentz
Brock and Glenda Weppler
Richard Westlake
Alan and Marjorie Westpahl
Pat and Renae Wheeler
Keith and Pat White
Hermelle Wilson
Jack and Suzanne Wilson
Jerry and Priscilla Wilson
Brent and Shelley Winiger
Merle and Eileen Zander
Terry and Teresa Zeltinger
Curt and Linda Zimbelman

ORGANIZATIONS/BUSINESSES

Alley Bertsch Memorial Scholarship
Allstate Insurance – Kim Albert Agency
American Bank Center
Brady Martz & Associates, PC
Bremer Bank
Burger King
Central Power Electric Coop, Inc.
Clear Channel
Coaches Choice Corporate & Athletic
Apparel – Wayne Sanders
Dakota Dental Health Center
Farm Credit Service of ND
Farstad Oil, Inc.
First International Bank & Trust
First Western Bank & Trust
Gate City Bank
Greenwood Plumbing & Heating
Homesteaders Restaurant
I. Keating Furniture World
Indigo Signworks
Integrity Viking Funds/Corridor
Investors, LLC
Investors Management & Marketing
Investors Real Estate Trust
Jason L. Rohrer Agency Horace Mann
JLG Architects
Johnsons Eyecare & Eyewear
Kenmare and Parshall Dental
Lowe's Printing Inc.
Magic City Beverage
Marketplace Foods – North Hill
Material Testing Services
Maxson Law Offices, P.C.
McGee, Hankla, & Backes, P.C.
Minot Family YMCA
Minot Paving Company
Minot Restaurant Supply
Minot's Finest Collision Center
Newman Signs, Inc.
North Dakota Guaranty & Title Co.
North Hill Bowl
Northstar Steel, Inc.
Northwest Building Improvement
Nybakken Body Shop
Odney Advertising Agency
Papa Murphy's Take 'N' Bake Pizza
Paradiso Mexican Restaurant
Peoples State Bank
Power of 1
Prairie Engineering, PC
Prairie Federal Credit Union
Premier Chiropractic
Ready Builders, Inc.
Sammy's Pizza
Signs Today, Inc.
Sleep Inn & Suites
Sports On Tap/Planet Pizza
Tecta America Dakotas
The UPS Store
Thomas Family Funeral Home
Tires Plus Total Car Care
Tollefson's Retail Group, Inc.
Town & Country Credit Union
Town & Country Insurance Agency, LLC
United Community Bank of North Dakota
Universal Athletic
US Bank
Valley Sport & Marine
Vardon Golf Club
Xcel Energy

DONORS

INDIVIDUALS

David and Kathy Aas
 Katie L. Abrahamson
 Robert T. Achs
 Ryan and Jessica Ackerman
 Cortnee A. Adacsi
 Joel and Deborah Adema
 John M. Adema
 David P. Aeikens
 Leo and Sara Aeikens
 Iraida Alba
 Debra Aldrich
 Sarah L. Aleshire
 Kamao Alexander
 Annette Alvarado
 Nancy B. Andersen
 Curtis and Erin Anderson
 Duane and Colleen Anderson
 J. Erik and Dianna Anderson
 Heather Anderson
 Nathan and Jennifer Anderson
 Susan E. Anderson
 Travis and Mary Anderson
 Chris and Annette Alvarado
 Brianna Andrews
 Jared and Pamela Andrist
 Sean Arbaut
 Ronald and Elizabeth Arbino
 Tim and Nicole Arens
 Hector and Rachel Arias
 Brittany M. Armstrong
 Darren and Amy Armstrong
 Della A. Arnaiz
 George and Michaela Arneson
 Kenneth and Bobbi Arneson
 Patrick and Amy Artz
 Omar Arzate
 Brent and Stacy Askvig
 Brenda J. Aspaas
 George Assanelli
 Kristen N. Atkinson
 Terry and Claren Auch
 Steven and Connie Ayotte
 Orlin W. Backes*
 Judith R. Bacon
 Michael and Liz Bakk
 Darla L. Bakko
 Stephen and Joan Banister
 Kenneth A. Banker
 John A. Bannister
 Jenny Barajas
 Jake Barge
 Robert and Laurel Barnard
 Larry and Caren Barnett
 Shonna L. Barth
 Linda M. Basler
 Rick and Ashley Beall
 Earl L. Beck
 Donald L. Becker
 Denise Begay
 Russell and Pamela Behm
 Brian and Paula Belanger
 Iraida P. Benitez
 Hunter Benjamin
 Matthew and Lindsey Benson
 Claudene Bent
 Benjamin L. Berg
 Eric and Kristi Berg
 James and Carrie Berg
 Joey and Erin Berg
 Steven J. Bergagna
 Tory Bergan
 Tawnya N. Bernsdorf
 Charles and Sheila Berntsen
 Mark K. Berntson
 Jim and Angela Berry
 Tracy and Sherry Berry
 Joan T. Bertram
 Ella Bertsch
 Lynda K. Bertsch
 Kevin and Sally Bethke
 Sidney A. Bingaman


Peggy Bishop
 Winston and Tam Black
 Rick and Mary Ann Blade
 Lynne Blair
 Charles and Laureen Blanchard
 John A. Blanchard
 Gregg and Jackie Blikre
 Duane W. Block
 Dwight G. Blomander
 Jim and Connie Blomberg
 Paul J. Blomberg
 Micah and Sara Bloom
 Byron and Chris Blowers
 Arlo and Karen Blumhagen
 Michael Boland
 Bo and M. Theresa Bolinske
 Roxanne K. Bolinske
 Bruce and Patricia Bolyard
 Jack F. Bonsignore
 Andrew and Lisa Borden-King
 Lance and Colene Borgsdorf
 Dawn Boucher
 William and Lizbeth Boulanger
 Sean M. Bourassa
 Nicholas N. Bowersox
 Eric Bowton
 Karen Boxall
 Ian and Lisa Boxall
 Elizabeth P. Boxwell
 Kathryn A. Boyd
 Nancy G. Boyd
 Robert and Dawn Boyd
 Glenn and Beth Boyeff
 Ty Brack
 Lindsey Bradbury
 David R. Bradley
 Terrance and Linda Bradley
 Michael and Amber Brainard
 Kelly and Penny Brandt
 Marvin and Kathy Braun
 Michael and Sharla Braun
 Duane and Jeanne Brekke
 Paul and Candace Brekke
 Bill and Wendy Brenner
 Brian and Michelle Breshears
 Dewey and Norene Breshears
 Chuck and Judith Brevik
 Debra Brissey
 Laura Brodeur
 Ronald and Deborah Brothers
 Doug Brown
 Grady Brown
 Mark Brown
 Bernard and Jo Ann Brown
 Diane Brunner
 Randy and Jaimie Brunner
 Debra A. Bryant
 David and Renata Buen
 Hasan Buker
 David Bull
 James and Patricia Burden
 Richard and Linda Burdette
 Zach and Lindsey Burdick
 Virginia Burns
 Muriel T. Burt
 Mark Busalacchi
 Douglas and Mary Buss
 Rod Buss
 Kenneth Buttacavoli
 Cynthia Caballero Smith
 Richard A. Cabral
 Marisela A. Cabral-Centeno
 Donna L. Calton
 Douglas and Shirley Calton
 Kristie L. Calton
 Josephine Camacho
 Paul and Sherri Camacho
 Tomas Camacho
 Susan S. Campbell
 Paul and Melissa Cantone
 Bill Caraher
 Joseph and Yvonne Carlson

Paul and Elaine Carlson
 John and Lorraine Carlson
 Marty and Diana Carr
 Thomas L. Carson
 Ruth H. Carson
 Sally Cash
 Ryan Castaneda
 Daniel Castro
 Wojciech and Alicja Cebulak
 Raul and Marisela Centeno
 Daniel Cervantes
 Jeff Cervantes
 Olga Cervantes
 Tallisan B. Cervantes
 Michael D. Chilson
 William M. Christen
 Kent L. Christianson
 Debora J. Clark
 Francis and Dawn Clark
 Morris and Jami Clark
 Guy and Patricia Claudy
 Verna P. Claudy
 Steven Clements
 David and Vicki Cline
 Lonnie and Linda Cline
 Ronald and Ruth Coleman
 Joseph and Adrienne Colloca
 Robert and Shelley Condon
 Barbara J. Conn
 Daniel and Linda Conn
 Amber Cook
 Glenn and Glenda Cook
 Jordyn Cook
 Niccole Cordova
 John and Beverly Cousins
 Jeremy R. Cowley
 Garnet Cox
 David and Lori Crain
 J. K. Cramsey
 Robert J. Creed
 Stephanie Creer
 Todd and Linda Cresap
 Lisa Cronan
 Alex L. Cundiff
 Steven Cunningham
 Terry and Pamela Curnow
 Bob and Ellen Marie Currie
 Christopher and Valeria Curtis
 Kirby Curtis
 Merita E. Dablow-Aldayel
 Jerrold and Jill Dahlen
 Joe and Kaylee Dale
 Roberta Dalton
 Myron T. Dammen
 David and Dana Dannewitz
 Amber Darrach
 Kennaya Davis
 Robert R. Deasy
 Patti Deasy Capstick
 Dick and Kathryn Debertin
 Dennis and Cindy DeGree
 Doug DeGree
 Mark Del Monaco
 Kathy A. Delahunt
 Brenda Demyen
 Richard and Geraldine Denderger
 Darral and Brenda Demyen
 John and Katelyn Denne
 Doris DePriest
 Larry and Donanne Derr
 Ted and Janet Deschamp
 James DeWulf
 Jay and Sheree Diede
 Josephine Digiovanni
 Jane E. Dilbeck
 Kenneth L. Disher
 Maria Dobbins
 Arla M. Dockter
 Duane and Lois Dockter
 Tanner M. Dockter
 Robert and Tammy Dolan
 Stuart and Michelle Dolan

Sue Dolan
 Jeff and Leann Doll
 Jeffery and Carol Doll
 Bernardo Dominguez
 David and Rita Dominguez
 Jordan Draeger
 Douglas Drew
 William J. Drewes
 Sandra Driskell
 Michael J. Dubreuil
 Brian D. Duchscherer
 Jason and April Duchscher
 Renee Dufner
 James and Jodi Dugger
 Kristine A. Duke
 Jim and Renee Duncan
 Grant M. Earich
 Tom and Margaret Earle
 Leonard M. Eaton
 Linda L. Eaton
 Bock and Terry Eckmann
 Derek and Kari Edholm
 William and Joan Edmonds
 Celesta M. Edwards
 Van and Christine Edwards
 Peter and Lydia Eitapence
 Alan and Cheryl Ekblad
 Julianne M. Eklund
 Paul and Amy Ellenbecker
 Robert and Lois Ellis
 Jerik and Kristen Elm
 Pearl E. Eman
 Lisa L. English
 Bruce and Laura Entwistle
 Chad Eul
 Christine L. Eul
 Jeff Eul
 Scott and Jordan Eul
 Branden S. Evans
 Jackie Evans
 Susan Evans
 Bill and Judy Everly
 Jerold and Kathleen Ewen
 Ronald and Patricia Fairchild
 Joy Falldorf
 James Faris and Jacqueline Bexell-Faris
 Ronald Farrell
 Trevor and Darla Fauth
 LeRoy and Nancy Feist
 Myron and Kathy Feist
 Gary B. Fender
 Ken and Lisa Fenske
 Gearl and Karen Fenster
 Jesse and Melissa Fettig
 Carol A. Fields
 Mark and Carol Fields
 Karina Fimbres
 Kimberly Finnegan
 Matthew A. Fiskum
 Mike and Vicki Fitzmaurice
 Brandi R. Fjeld
 Stacy Flaten
 William and Carol Fleming
 William and Caycee Fleming
 Jadin Flexhaug
 Scott and Christine Flitcroft
 Clayton T. Foley
 Jim and Kathleen Foltz
 Gabriela Fonseca
 Sergio Fonseca
 Evan J. Forde
 Aaron and Jessamy Fornshell
 Jeffrey and Sharron Forsberg
 Jean C. Forsman Zerface
 M. S. Fosland
 Duane and Carol Foss
 Amanda C. Francis
 Timothy J. Francis
 Stephen and Natalie Franco
 George G. Franklin
 David A. Frantsvog
 Wayne and Rhonda Franzen

Dustin Foster

△ Minot, ND
Accounting
and Finance



“Your

financial support helped me achieve
my goal of earning a double major from
Minot State. I cannot thank you enough.”

Lloyd and Jackie Freeman
Mary Frenza
Aaron and Kaitlin Fried
Neil S. Fulton
Bruce and Judy Funk
Robert and Colleen Fylling
Mike and Kathy Gaddie
Bob and Kathy Garbe
Lori J. Garnes
John Garrett
Luther Garrett
Everardo and Victoria Garza

Jeromy and Kelly Geiger
Richard and Joanna George
Larry and Cheryl Gerjets
Corey and Janet Gerken
Michelle K. Gersitz
Bruce and Connie Geyer
Edward and Cynthia Geyer
Jerry and Patricia Giesinger
Michael and Sharon Gifford
Sharon Gill
Elizabeth L. Gjellstad
Stuart Glasoe and Anne Kelly-Glasoe

Eunice Goddard
Stanley and Joelle Goldade
Paul J. Goldschmidt
Heather L. Golly
Rudy and Lorraine Gonzalez
Laverne N. Gores
Deanna K. Gotvaslee
Irene Goushen
Terry and Yvonne Graham
Gail Grant
Douglas M. Graupe
Mark D. Graupe

Gene and Corinne Gray
Connor and Amber Green
Kendall Green
Edward Greene
Sean Griffin
Rena Grimstad
Randall and Alysha Grosse
Fred and Karlene Grosz
Dan and Christie Gubbels
Dale Gudmundson
Tammy Gudmundson
Ally Guldborg

Tim Guldborg and Ann Beste-Guldborg
Paul and Harriet Gunderson
Clayton and Vicki Gunn
Roxie Gurley
Tracy Guy
Kenneth and Shanette Haarsager
Ken and Cathy Haarstad
Shirley E. Haberlack
Catherine F. Hackett
Gregory and Dawn Haga
Mary J. Hagenstein
James and Linda Haider
Douglas and Susan Halden
David F. Hall
Mark and Jennifer Hall
Scott and Heather Halverson
Marian A. Halvorson
Monica Hamilton
Wally and Winnie Hankla
Frederick Hannah
Deborah Hansen
Leslie Hanson
Mike and Katie Hanson
Noel and Geri Hanson
Nicole Hanson
Steve Hanson
Jason Harbor
William and Sandra Harbort
Robert and Marlene Hargrave
Kevin and Leisa Harmon
Randy and Lisa Harmon
Brad and Delight Harris
Robert and Marlys Harris
Joel A. Hash
Amy D. Haskell
Autumne Haskell
Douglas R. Hastain
John W. Hatcher
Kevin and Diane Hatfield
William and Mary Hatfield
Clara A. Hauck
Joel and Natalie Hauf
Darryl Haugen
Lance and Christine Haugen
Celeste Hauser
Richard and Inta Hays
Douglas and Jennifer Headington
Everett and La Velle Headington
Randy Hedberg and Cheryl Hysjulien
Marvin and Nicole Headington
James B. Heggie
Rick and Erin Heit
Andy and Debbie Heitkamp
Alexis Henderson
John and Sarah Henderson
Katherine Hendren
Adam M. Henjum
Dale and Lana Henry
Gordon and Patricia Henry
Lilly F. Henry
Travis and Sabrina Herrmann
Mary Hertel
Roger and Valerie Heth
Craig L. Heupel
Jill E. Hieb
Douglas Hill
Richard K. Hill
John Hinrichs
Bernell B. Hirling
Stanley and Jane Hirst
Grant W. Hladun
Ashley Hoiland
Suzanne T. Hoke
Pat and Linda Holien
Grace E. Holm
Mike and Thea Holm
Barry and Lynae Holmen
Bonnie Holmen
Robert and Patricia Holmen
Loren and Patricia Holmgren
Kelsey and Erin Holt
Brett and Lori Holtz
Robert and Jane Holtz

Ronald and Joanne Holtz
Lloyd and Ellen Hornbacher
Robert M. Horne
Marcia Hornecker
Rick Hornecker
Tricia B. Houmann
Roy Houston
Gary and Carol Hovdestad
George and Peggy Hudson
Douglas and Bonnie Huenerbein
Anton A. Huether
Ron and Korie Huettl
Matthew P. Huffman
Jordan and Aaron Hughes
Ryan Huisenga
Don and Sherry Hummel
Lynn and Beverly Hummel
Mike and Susan Hummel
Jeffrey and JoAnne Hurdelbrink
Mary E. Huston
Tim and Jennifer Hutchins
Drew and Tarra Hysjulien
Wayne and Donna Hysjulien
Marcia Ippolite
Steven and Connie Irely
Paul H. Isaacson
Michael R. Ives
Denise J. Izzo
Teasha Jackson
Kimberly F. Jakubowski
Jeffery and Kelly James
Mark and Mary Jane Jantzer
Jaci Jarmin
Joseph C. Jastrzembki
Darla Jeffries
Paul and Amy Jelacic
Jennie Jennings
Kenneth A. Jensen
Mat and Emily Jensen
Kipp and Laurie Jensen
Steven and Cynthia Jensen
Bradley and Mary Ann Johnson
Brent and Kimberly Johnson
Chris Johnson
Christina M. Johnson
Dixie Johnson
Duane and Roberta Johnson
Harvey and Denise Johnson
Jon and Trudee Johnson
Ken and Marcia Johnson
Lee M. Johnson
Lisa A. Johnson
Mark and Mary Johnson
McKaya L. Johnson
Mya Johnson
Paula A. Johnson
Sharon M. Johnson
Terry and Gail Johnson
Willard and Laurie Johnson
Richard and Mona Johnston
Chris Jones and Jennifer Hedberg Jones
Glenn and Susan Jorgenson
Paul and Nicole Joy
Thomas E. Kana
John and Patty Karhoff
Scott A. Kast
Maglyn Keeney
Lance and Julie Keller
Robert and Marla Keller
Renee Kelly
David Kendall
Kenneth and Patricia Kern
Tad and Christine Kern
Clay and Melissa Kerr
Jacob C. Kettler
Robert Kibler and Alexandra Deufel
Galen and Verla Kihle
Kathryn C. Kilroy
Al and Jean Kindret
Ernest and Bonita King
Rebecca King
Trent and Deborah Kinzell
Kenton Kirby

Jerry C. Kirk
Scott R. Kittell
Donna Klein
Robert and Laureen Klein
Carole Klein-Alexander
Howard and Melanie Klug
Jonn D. Knecht
Bob and Connie Knudson
Cynthia Kohr
William and Marion Kolb
Terry and Kathy Kolbo
Kevin Kolling
Bailee J. Koop
Thomas and Liva Korf
Leslie and Glenda Korgel
Ethan Korman
Mike and Kate Korman
Madison M. Kossan
Rebecca Kostenko
Tom Kowal
Kevin Kowalchuk
Waldemar Kowitz
Lori Koza
Nathan Koziol
Rebecca Kraft
Curtis Kragero
Brekka E. Kramer
Martina L. Kranz
Rodney and Cheryl Kremer
Sandra Kress
Blaine and Mary Krogh
Cole and Lacey Krueger
Curtis and Nancy Krueger
Robert and Laura Kuha
Kim Kuhne
Curtis and Linda Kumpf
Krista R. Kurtz
Kevin and Lynne Kvale
Wade and Mary Kynett
Rick and Kathy LaCroix
Shane and Micki LaDage
Margaret D. LaFontaine
Jackson and Elora Lake
Daniel and Marianna Lamb
Jeffrey J. Lane
William and Raynell Lange
Terry J. Larsen
Aaron Larson
Claire R. Larson
Curtis A. Larson
Elaine H. Larson
Michael A. Larson
Tanner L. Larson
Swift and Sheila Latham
Lowell and Ann Latimer
Doris M. Lauf
Tom and Joanne Lautenschlager
Suzanne E. Laviano
Ronald Le Clerc
Edward A. LeBeau
Jamie Lee
Zachary Lee
Julie P. Leer
Donald and Phyllis Lehnen
David Leite and Linda Olson
Karl and Michelle Lembke
Corrina D. Lemer
Vincent and Kristin Lenzion
Paul and Cheryl Lepp
Tim and Diane Lesmann
Jane Lessard
Joanne Lester
Arnola D. Leverson
Kimberly D. Lewis
Natalia Lewis
Robin A. Liermann
Donald and Audrey Lilly
Jim and Becky Limke
Michael and Nichole Linnell
Jack Lipp
TJ and Penny Lipsey
Kenneth and Joan Littlefield
Maxine Lodmell

Chad Love
Taryn Love
William D. Luban
Gary and Delores Lund
Jarid and Lynn Lundeen
Keith and Debbie Lutz
Theresa Lynch
Steven and Kari Lysne
John and Yolanda Macias
Terrie MacIntyre
Bruce and Susan Mack
Tom and Linda Madsen
Carl and Marie Magnus
Randall and Lesley Magnus
Thelma D. Mahaffey
David and Sheila Maher
David and Susan Mary Weber
Holly L. Major
Lance and Amy Makeeff
William and Teresa Malmgren
Joanne Manchester
Peter and Roxanne Maragos
Dustin and Kelli Marchand
Daniela Marin
George and Judith Maritz
Clark and Joyce Markell
Richard and Jane Markle
Beth Marschner
Brook L. Marshall
Daniel and Kate Marshall
Ronald and Serendipity Marshall
Susan M. Marshall
Matthew and Heather Martin
Christina M. Martinez
Wayne and Della Martinsen
Kevin and Rhonda Massine
Ramona J. Mathany
Richard G. Mathson
Dianne C. Maupin
Ronald and Suzanne Mausolf
Don and Caron May
Patricia J. Mayer
Jamaal and Tracey Mays
Leah E. Mays
Jody Mazzarella
Roger McAfee
Cameron and Chelsea McBeth
Janet McConkey
Margaret E. McGuinness
June A. McJunkin
Aaron and Janna McKechnie
Chad P. McNally
Jordan P. McNutt
James and Wanda McWhorter
Brilee M. McWilliams
Curt and Lorraine Medalen
Ernie and Helen Medalen
Scott and Sara Medalen
Daniel and Alma Mendez
Ted and Sandra Menke
John and Mary Mercer
Gary E. Meredith
Ken and Debra Meyer
Mavis I. Meyer
Vicki J. Michels
Chelsey Mickelsen
Lee and Janice Mickelson
Nancy L. Mickelson
Allen and Kay Mueller
Kate Milberger
Lucretia A. Millen
Brian and Tricia Miller
Charles and Diane Miller
Joanna D. Miller
Jolina M. Miller
Kathleen R. Miller
Miles M. Miller
Vicki A. Millette
Dale and Shannon Mindt
Ryan Miner
Laurie Missling
Carol Mitchell
Hannah Mitchell

Mark Mitchell
 Sallie Mitchell
 Scott Mitchell
 Thomas Mitchell
 Rodney R. Mittelsteadt
 Shinkiro Miyawaki
 Selmer and Carol Moen
 Patricia Mohr
 Greg Molnar
 Bob and Lavone Mongeon
 Melanie R. Moore
 Neil L. Moore
 Margaret Moorman
 Verna V. Moos
 Michael J. Morelli
 Pat and Laura Morelli
 Reggie and Brenda Morelli
 Chaneil Morin
 Peggy A. Morris
 Rodney and Jacky Rae Morris
 Tim and Kim Morris
 Gregory and Nancy Morrison
 Doug and Lisa Mouser
 Scott M. Muhle
 Brenda L. Munson
 Margo E. Murdock
 Ryan and Cortney Murphy
 Morgan Myers
 Alison Myhra
 Margie Myhra
 Clayton and Sharon Narum
 Amelia R. Nash
 Allen and Jolene Nechiporenko
 Jon D. Nehring
 Brandon J. Neiss
 Andrew and Vaunda Nelson
 Ann Nelson
 Bruce and Robyn Nelson
 Elizabeth K. Nelson
 Jack and Jamie Nelson
 Lowell and Cynthia Nelson
 Sandra J. Nelson
 Sean Nesbitt
 Emily Nesdahl
 William and Candace Nesheim
 Paul Ness
 Ralf and Suzanne Neufang
 Gary E. Neuharth
 Kevin and Cynthia Neuharth
 David B. Neumann
 Karen Newman
 Max E. Niesar
 Matt and Amanda Nissen
 Nicholas A. Nissen
 Martin C. Nizlek
 Michael and Laurie Nolan
 Mark and Anne Nordgaard
 Mike and Kathleen Notestine
 David and Sandra Nyburg
 Mark and Linda Nygard
 Carol J. O'Connell
 Matthew and Deanne Ober
 Carl Obert
 Isaac and Beth Odahlen
 Jackie Offerman
 Nicholas Ogryzlo
 Heidi J. Okeson
 Brett J. Olson
 Clarence P. Olson
 Cory and Cari Olson
 Craig and Amy Olson
 Darren and Megan Olson
 Deborah J. Olson
 Gale Olson
 Rodney and Marcia Olson
 Fel Ordonia
 Gary and Jolene Orluck
 Dwight and Jane Ormiston
 Michael and Suzanne Ortiz
 Michael and Tamie Ortiz
 Dwight and Lois Ostenson
 Frank J. Pacovsky
 Cody and Tina Palm

Barbara J. Parker
 David L. Parker
 Janna R. Parker
 Karen D. Parkhurst
 Rodger and Carol Parkhurst
 David and Cynthia Parks
 Perry and Jessica Pascual
 Norman Paskowsky
 Samuel and Connie Pate
 Kyle and Kelsey Patterson
 Simeon and Christina Paxman
 Mariah Payne
 Paul and Nancy Pearson
 Shirley Pedersen
 Gladys Pennington
 Nate and Shaely Perleberg
 Leon M. Perzinski
 Alyzabeth Pessala
 Seth and Christine Peter
 Jerald and Mary Petersen
 Chris and Denise Peterson
 Jay and Amanda Peterson
 Marlin and Joanne Peterson
 Ray and Cresta Peterson
 Russell D. Peterson
 Douglas and Paula Pfau
 Eric and Kathryn Pfautz
 Douglas A. Pfliger
 Layne M. Pflieger
 David Phillips
 Shirley Pickard
 Steve Pickard
 Stanley and Dee Pickett
 Walter and Becky Piehl
 Les and Diane Pierson
 Ernst Pijning
 Larry Platz
 James and Peggy Pollard
 Billy and Agnes Ponder
 Colleen L. Pope
 Denis Porter and Christine Hinrichs Porter
 Thomas and Sharon Porter
 Mark and Kathy Potter
 Lucia Preciado
 Shirley Preskey
 Brenda Prestayko
 Dillon M. Price
 Edith Pritchard
 Gary and Kathy Rabe
 C.J. Rabideau
 Michael and Jolene Rademacher
 Ryann P. Rafferty
 Mark B. Rasmuson
 Lui and Carol Ravnaas
 Erika Redmond
 Ann Reeder
 David G. Reeder
 James A. Reeves
 Carly M. Reinke
 David Reiser
 Lois E. Remter
 Robert and Lois Renfro
 Charles and Jan Repnow
 Rita M. Resch
 Lucio D. Reynoso
 Aaron Richard
 Daniel Ringrose and Kathy Hintz
 William Risley
 Henry and Elizabeth Ritter
 David and Jacqueline Rizzari
 John and Donna Roach
 Melissa S. Roberts
 Peggy Roberts
 Tim and Gigi Roach
 Rodney and Cynthia Rod
 Valerie K. Rodgers-Owen
 Celestino Rodriguez
 Kristina Rodriquez
 Scott Rolfs
 Milt and Bonnie Rolle
 Benita Rollins
 Roxane T. Romanick
 Boyd Romine

Catherine A. Rose
 Gary J. Ross
 Cody Roteliuk
 Rusten and Lisa Roteliuk
 Stanley and Melissa Rowe
 Joyce Rucker
 Darrell and Judy Rud
 Melinda S. Rudnick
 David L. Rudolph
 Jonathon and Danielle Rued
 Danielle Runco
 Amber L. Ruzicka
 Edna M. Sabo
 Gerald Sadlemyer
 Jameela Sanchez
 Sharon Sanchez
 Stuart and Mary Sander
 Joy K. Sanders
 Mark Sanders
 Margaret Sandvik
 Joshua D. Sandy
 Douglas Sanford
 Bonnie Sarkonak
 Marla Sasse
 Caroline Satterthwaite
 Eileen Savelkoul
 Michelle Sawyer
 Rhyan Sawyer
 Dan and Linda Schaefer
 Clint R. Schaeffer
 Eric and Stacy Schaeffer
 Neil and Jo Scharpe
 Robert and Janeen Scheeler
 Priscilla D. Scheet
 Robert A. Schempp
 Wayne and Margaret Schempp
 Genevieve G. Schentzel
 Paul and Carol Scheufler
 Terry L. Schieler
 Robert Schlaeger
 Jerry and Laurel Schlag
 Carissa M. Schlesinger
 Lenore Schlichting
 Thomas and Cheryl Schmid
 Craig and Kari Schmidt
 Daniel and Peggy Schmidt
 Paul and Shelly Schmidt
 Frank and Tena Schneider
 Johann Schreiner
 Jordan R. Schulz
 Carol L. Schwan
 Lynn Schwark
 Toni D. Schwartz
 Susan E. Self
 Lisa Selmi
 Richard and Penny Severin
 Douglas and Gloria Shamberger
 Sohan Sharma
 Mickey M. Shay
 Rhonda J. Shepard
 Margaret E. Serve
 Wayne and Denise Shipman
 Charlo Shirley
 Samantha T. Shoats
 Mike and Marie Sidener
 Andreas and Susan Silvas
 P. S. Silveira
 Carolyn Simmons
 Tom and Celeste Simmons
 Dale R. Simon
 Jim and Lana Simons
 Barbara A. Sinha
 Todd and Polly Sivertson
 Galen and Terri Skarphol
 Ryan and Anna Skarphol
 Tammy L. Skiehar
 Justin Skolrud
 Mark and Rachel Slater
 John and Tracy Slobodian
 Sylvia Slobodian
 Greg and Jane Smestad
 Charles and Rosaline Smith
 Cheryl G. Smith

Darrel A. Smith
 Derek and Aili Smith
 Kelly Smith
 Mary K. Smith
 Nicole Smith
 Paula Smith
 Sabrina Smith
 Sheldon P. Smith
 Nicole Snoberger
 Ann Solberg
 Richard and Barbara Solberg
 Richard and Eileen Solberg
 Ragene E. Sovak
 Dwayne Speegle
 Melissa J. Spelchen
 Gary and Darlene Spencer
 Loren Spillum
 Ellen St. Croix
 Eric and Ellen Stahlecker
 Robert and Jennifer Stahlecker
 Tracey Stahn
 Ken and Sandy Starr
 Gary and Holly Stefanowicz
 Sharella D. Stein
 Vern and Donna Stevick
 John and Lisa Stewart
 Lawrence E. Stewart
 William and Melanie Stillwell
 John and Shellie Strand
 John and Gail Stratton
 John and Glenda Streccius
 Phillip Streccius
 Les Strege
 Barb Suko
 Brooke L. Suko
 Matt and Erin Sund
 Robert and Linda Sundberg
 Jaycin and Michelle Sundheim
 Joseph and Heidi Super
 John Supsic
 Russ and Mary Swain
 Albert L. Swanson
 Pat and Sherry Swanson
 Duane D. Sweep
 Delores Synnott
 Robert and Patricia Syre
 Johna Taylor
 Nicholas and Markoya Taylor
 Paul and Sherri Tefft
 Ed Tesselone
 Riddhi Thaker
 Steven and Nancy Thane
 David and Kelly Thom
 Willie and Jackie Thom
 Brad and Jackie Thomas
 George Thomason
 Madison E. Thompson
 Stephen and Melinda Thompson
 Doug and Kim Tiedman
 Mike and Sonia Timm
 Karen Toffan
 Duane and Sharlene Tollefson
 Mark Tollefson
 Del and Violet Torno
 Allan and Linda Torrington
 Ed J. Toth
 Loretta Tow
 Kennedy Tracey
 Mark and Patti Traxler
 Bill and Kara Triplett
 Louis A. Trombetta
 Ron Trottier and Tami Jollie Trottier
 Jerry and Susan Tuchscherer
 Lori Turk
 Katherine M. Tyler
 Ted and Sheri Uecker
 Danny and Laura Valdez
 Joanne Van Alstine
 Steve Van Winkle
 Daniel R. Vanness
 Carmen A. Vasquez
 Steve and Jackie Velk
 Joan Velles

Jeffrey and Janelle Verhey
Joyce Viall
Vincent Villanueva
Brian and Kayla Vine
June Vix
William Vogel
Paul G. Vogelsang
Larry P. Volk
Leonard J. Volk
Marc Wachtfogel
Randy and Robin Wagner
Jay and Carla Wahlund
Aaron Wald
Steven Wald
Robert L. Walker
John and Joan Wall
Greg A. Wallace
John W. Walsh
Tracy Walvatne
Murray Wankel
Michael J. Wardzinski
Arlee K. Waring
Kristen M. Warmoth
Jonathan and Shellee Warnes
John Warrick
Rick and Jonelle Watson
Jeffrey and Laura Waxman
David and Laurie Weber
Roger and Roberta Weber
Dave J. Wegner
Barry and Darla Weigel
Arnold Weinrich
Chris and Kasey Weinrich
Delynn and Michelle Weishaar
Daniel B. Weiss
Clint Wells
Fred and Carmen Welscher
Dwight and Deb Wentz
James and Nicole Wessel
Alta Mae Westgaard
Scott and Sue Weston
Jerry L. Wheeler
Robert and Betty Wheeler
Sherry L. Wheeling
Zachary and Desarai Whiteley
Stanley F. Whitesell
Eleanor Wicker
Randii K. Widmer
Sara E. Wiedmaier
Greg and Cindy Wiest
Scott Wigness
Kyle Wiley
Tom and Karin Will
Cindy Williams
Howard Williams
Karli Williams
Hank Williamson
Mark and Natalie Williamson
Arthur and Mary Wilson
Gerald and LaVonne Wilson
Hermelle A. Wilson
Penelope J. Wilson
Hugh Wiltzen
Jenna Wiltzen
Jerry and Charolette Winans
Dick and Judy Winje
Gary and Zoey Winkler
Donna Winterton
Tracy Winterton
George and Kim Withus
Keith and Stephanie Witwer
Edward and Tammy Wolf
Rodney and Verna Wolf
Megan L. Woltz-Solis
Randy Wondrasek
Dennis Wright and Karen Brunner-Wright
Julie Wright-Costa
Audra L. Wyman
Daniel G. Yale
Matthew J. Yale
Gene and Joann Zahursky-Klein
Renate Zalomsky
Steven and Deborah Zaun

Nathan Zelinski
Mike and Angela Zerr
Kelsey L. Ziegler
Robert and Toni Ziegler
Ronald and Linda Ziegler
Curt and Linda Zimbelman

ORGANIZATIONS/BUSINESSES

ACI Electric, Inc.
Ackerman-Estfold Engineering and Management Consulting, Inc.
Applebee's
Big Sky Appraisal & Valuation Service, P.C.
Bosard, McCutcheon & Rau
Cam's Service and Repair, LLC
Century Eyewear
Children's Garden Preschool
Coldwell Banker - 1st Minot Realty
College Ave Drugs
Crosby Building Supply, Inc.
Crossroads Veterinary Hospital
Dakota Pawn
Dick Anderson Construction, Inc.
Doug Lockrem Motorcycle Rally
Dupont Building, Inc.
Dustin and Gabriel Fisheries, Ltd.
Elk Ridge Overhead Door, LLC
Eric Kuehne Farms LLC
Farmers Union Insurance - Ressler-Sipma-Beuchler Agency
FB Properties
First International Bank & Trust - Watford City
Foltz Farming, LLC
Garbel's Furniture & Flooring, Inc.
George Mellum Golf Scramble
Gold Rush Electric, Inc.
Greenbrier Lawn & Tree Expert Co.
Harley's Service Center
Hockett Farms, Inc.
Holt Insurance Agency
Hubbard Chevrolet
iBuild Solutions, Inc.
Investors Management & Marketing, Inc.
Ivy Lawn Memorial Park and Funeral Home
J. W. Nelson Transports, Inc.
KB Contracting
KXMC-TV, Channel 13
Lane's Carpet Installation
League of Social Sciences
Meadow Ridge Farms, Inc.
Michayluk Farms
Minot Area Chamber of Commerce
Minot Area Community Foundation
Minot Art Club
Minot Nutrition Addiction
Modular Fabrication, Inc.
Morelli Distributing
MSU Staff Senate
Northwest Battery and Electric, LLC
NYOC, Inc.
Ocean Front Properties, LLC
Otter Tail Corporation
Pepsi Cola Bottling
Professional Pool Care
Real Builders, Inc.
Samurai Smiles
Schwan's Shared Services, LLC
Sergios's of Minot, Inc.
Smitty's Fireplace Shop, Inc.
Sorum Oil
Souris Valley Dental Group
South Hills Electric, Inc.
Taube Museum
Temecula Valley Chiropractic
The Boat Top Shop
The Computer Store
Thomas Family Funeral Home
Three Affiliated Tribes
TKE Alumni
Trinity Health
Verendrye Electric Cooperative
Vibeto Orthodontics

Vintage Flooring
Wesley Cabel Enterprises, LTD
Winsupply Minot ND Co.
Zeller Construction

ESTATES & TRUSTS

The Pat and Connie Benzenbower Family Trust
Janis Dislevy Estate
Duke Family Foundation
Virginia Geesaman Estate
Lyle C. Hanson Estate
Douglas J. Jaeger Estate
Rose Morgan Estate

MATCHING GIFT CORPORATE SPONSORS

Ameriprise Financial
Auto-Owners Insurance Company
Hallmark Corporation Foundation
MDU Resources Foundation
MSU Development Foundation
NDUS Foundation
Northwestern Mutual Foundation
Oracle Corporation Matching Gifts Program
State Farm Companies Foundation
Sun Microsystems Foundation
Wells Fargo Educational Matching
Xcel Energy Foundation

IN HONOR

In Honor of Robert E. Holmen
Barry and Lynae Holmen
Bob and Karen Holmen
Bonnie Holmen

In Honor of Richard Jenkins
Thomas J. Myhra*

In Honor of Margaret A. Moore
Carole Klein-Alexander

In Honor of John W. Phillips
Roxane T. Romanick

In Honor of Marv Semrau
Thomas J. Myhra*

IN MEMORY

In Memory of Alvin Ahmann
Randy and Pat Burckhard

In Memory of Verna Aleshire
David B. Aleshire
Sarah L. Aleshire
Todd H. Aleshire
Jennifer J. Allan
Tim Arens and Nicole Thom-Arens
Nadine Blesener
Paul Bodine
Ardell L. Boyeff
Catherine Carlson
Daniel and Tracy Christen
Emmeline Curtis
Celesta M. Edwards
Thomas and Susan Falck
Grace J. Fisher
Phillip and Jill Halfond
Stanley and Jane Hirst
Paul H. Isaacson
Adelaide Johnson
Kristian and Cathy Knutson
Lowell and Ann Latimer
Elizabeth C. Love
Nancy Love
Jerry and Donna Lyon
Kevin and Cynthia Neuharth
Berniece B. Olson
Walter and Becky Piehl
Jack and Carol Pyne
Grace M. Reynolds
Rod L. Romine

Curt and Michelle Saari
Bert and Anna Marie Shomento
Doris Slaaten
Ken and Sandy Starr
Daryl and Lola Vasichuk
Rick and Jonelle Watson
Laura I. Wendt
Robert and Betty Wheeler
Bruce Whidden
Tom Willis and Paula Lindekugel Willis

In Memory of Warren Allen
Donald and Carolyn Andrews
Curt and Lorraine Medalen
Janice I. Nerem
Harold and Carol Stolt
Arvin and Pat Swanson

In Memory of Horst "Robert" Armstrong
Raymond and Cassie Haas

In Memory of James E. Artz
Rick and Andrea Hedberg
Darrel and Teresa Loftesnes
MSU Board of Regents
Steven and Jennifer Shirley
Kevin and Renae Yale

In Memory of Orlin Backes
David and Kathy Aas
Lynn W. Aas
Bruce and Carolyn Adams
Ken and Lona Anderson
Richard and Beverly Anderson
Brian and Joan Backes
Chuck and Leslie Barney
Wallace and Mary Ellen Berning
Frank and Val Bruels
Rich and Vicky Campbell
Bruce and Linda Christianson
John and Leslie Coughlin
Blaine and Kathy DesLauriers
Dale and LaDonna Elhardt
First Western Bank & Trust
Wayne and Brenda Foster
Lorri K. Haberman
Peter B. Hankla
Wally and Winnie Hankla
Kevin and Leisa Harmon
Rick and Andrea Hedberg
Terry and Gail Hjelmstad
John and Karen Hovey
Don and Sherry Hummel
Integrity Viking Funds
Duane and Roberta Johnson
Ken and Marcia Johnson
Sally F. Johnson
Eddie G. Kopperud
Owen and Elizabeth Kornkven
Brekka E. Kramer
Karen K. Krebsbach
Dan and Jeri Langemo
Darwin and Nancy Langseth
Leonard and Marlene Larsen
Mark V. Larson and Nancy Bjork
Lowell and Ann Latimer
Byron and Sheila Lindbo
JoAnn K. Linrud
Darrel and Teresa Loftesnes
Dick and Gloria Lokken
MSU Board of Regents
Brent L. Nett
Jack and Colette Nybakken
Tom and Mary Probst
John and Sandra Reiser
Milt and Bonnie Rolle
Rod L. Romine
Maynard H. Sandberg
Eric and Stacy Schaeffer
Robert A. Schempp
Edward and Linda Schnaible
Lance Schreiner and Laurie Schreiner-Kirby

Carlton Mhangami

▢ Zimbabwe
Accounting and Finance

A photograph of three students in a classroom. A young man in the foreground is writing on a whiteboard with a blue marker. Two other students, a young man and a young woman, are looking at the whiteboard. The scene is brightly lit, and the background is slightly blurred.

“I believe

kindness should spread like wildfire. Because of you, I will be able to build a future and spread the same kindness that was shown to me.”

Miranda Dyke

△ Surrey, North Dakota
Communication Disorders

“
I am

one step closer to reaching my goal of
graduating from Minot State University
thanks to donors like you.”

Yvonne Schreiner
Steven and Jennifer Shirley
Bert and Anna Marie Shomento
Kerwin and Wendy Sletto
Dean and Diana Somerville

Bob and Linda Sundberg
Buzz and Linda Syria
Don and Bonnie Trueblood
Larry and Edwina Wahlund
David and Charise Waind
Bruce and Diane Walker
Paul O. Whitman
Dennis and Liz Wolsky
Xcel Energy

Curt and Linda Zimbelman
Jason and Dusty Zimmerman

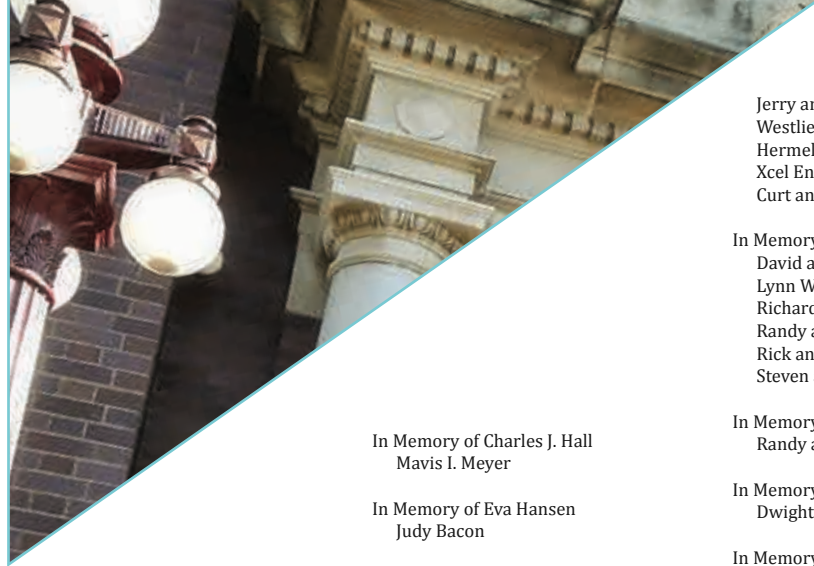
In Memory of VeeAnn Backes
David and Myrna Blackstead

In Memory of Kathleen M. Bannister
Michael and Toni Petrikenas
Jerry and Laurel Schlag

George Thomason
Carol E. Ventsch
Leon and Darla Zeltinger

In Memory of Mary Lou Blikre
Randy and Pat Burckhard

In Memory of Gail Y. Brisson
David and Myrna Blackstead



In Memory of Fabian Burckhard
Randy and Pat Burckhard

In Memory of Lucille Burckhard
Randy and Pat Burckhard

In Memory of Marguerite L.
Chambers
Donald J. Busek
Eugene and Dawn Evenson
John and Judy Knapp
Donald and Audrey Lilly
Jeanne K. Nathe

In Memory of Edna Champagne
Arvin and Pat Swanson

In Memory of James R. Charlton
Arvin and Pat Swanson

In Memory of Beverly D. Collins
Sertoma Club of Minot

In Memory of Curtis L. Currie
Dwight and Jane Ormiston

In Memory of Emily "Melo" Davis
Arvin and Pat Swanson

In Memory of Raymond A. Dostert
Kevin and Renae Yale

In Memory of Daniel J. Draovitch
Rupert and Marlys Schreiner

In Memory of Kay Erickson
Dale Spartz and Shelley K. Erickson

In Memory of Phillip and Barbara Fallis
Frances A. Lovelace

In Memory of Daniel L. Feist
Randy and Pat Burckhard

In Memory of Gerald R. Florence
David and Myrna Blackstead

In Memory of Chase L. Fugere
Don and Bonnie Trueblood

In Memory of Larry Goodman
Selmer and Carol Moen
Tim and Kim Morris

In Memory of Carolyn S. Graupe
Rick and Andrea Hedberg
Greg and Susan Johnson
Lange Associates
MSU Faculty and Staff
Judith F. Nelson
Hermelle Wilson

In Memory of Charles J. Hall
Mavis I. Meyer

In Memory of Eva Hansen
Judy Bacon

In Memory of Barry L. Hedberg
Kevin and Renae Yale

In Memory of LeRoy D. Hedberg
Kevin and Renae Yale

In Memory of Joseph M. Hegstad
Jackie A. Hegstad
Marv and Barb Semrau

In Memory of Trent C. Heinemeyer
Arvin and Pat Swanson

In Memory of Gloria Hendrickson
Dilley
Dalton and Bonnie Deardurff

In Memory of Kevin Michael Hill
Michael and Joan Hill

In Memory of Jack H. Hoeven
David and Kathy Aas
Lynn W. Aas
Madelyn L. Alme *
Richard and Beverly Anderson
Gae Avers
Orlin W. Backes *
Randy and Pat Burckhard
Rich and Vicky Campbell
Bruce and Linda Christianson
Pamela Degele
Blaine and Kathy DesLauriers
Dwight and Renee Farrell
Wayne and Brenda Foster
Wally and Winnie Hankla
Kevin and Leisa Harmon
Rick and Andrea Hedberg
Stephen and Jessica Henderson
Thomas and Joann Holt
Peter Hugret and Judith Howard
Independent Community Banks
of North Dakota
Greg and Susan Johnson
David and Linda Keup
Howard and Melanie Klug
Steve Kottsick
Karen K. Krebsbach
Greg and Dorijean Kurtz
Dan and Jeri Langemo
Andrew and Sheril Maragos
Harry T. Mowbray
Jack and Colette Nybakken
Shannon D. Radke
David and Carla Reiten
Lance Schreiner and Laurie
Schreiner-Kirby
Marv and Barb Semrau
Steven and Jennifer Shirley
Greg Simonson
Dean and Diana Somerville
John and Jodi Stewart
Roger and Michelle Tollefson

Jerry and Natalie Ulberg
Westlie Motor Company
Hermelle Wilson
Xcel Energy
Curt and Linda Zimbelman

In Memory of Raziye Hoeven
David and Kathy Aas
Lynn W. Aas
Richard and Beverly Anderson
Randy and Pat Burckhard
Rick and Andrea Hedberg
Steven and Jennifer Shirley

In Memory of Giles Jantzer
Randy and Pat Burckhard

In Memory of Rick V. Johnson
Dwight and Jane Ormiston

In Memory of Wayne A. Johnson
Randy and Pat Burckhard

In Memory of John J. Keller
Randy and Pat Burckhard

In Memory of Cheryl D. Lane
Lynn W. Aas

In Memory of Patty Lane
Ken and Lona Anderson

In Memory of Patricia M. Larson
Darwin and Nancy Langseth

In Memory of Richard L. Larson
Darwin and Nancy Langseth
Henry and Sharon Milkey

In Memory of Douglas G. Lockrem
Clayton and Sharon Narum

In Memory of Ronald I. Loen
David E. Seed

In Memory of Donald "Hap" Lund
Scott and Susan Weston

In Memory of Jacqueline L. Marcks
Kevin and Renae Yale

In Memory of DeWayne Martin
Donald and Arveda Selk

In Memory of Karen G. Martin
Dan and Jeri Langemo

In Memory of Herbert L. Meschke
Dan and Jeri Langemo
Minot Symphony Association

In Memory of Cyril C. Moore
Carole Klein-Alexander
Margaret A. Moore

In Memory of Rose M. Morgan
Lorraine Thomas

In Memory of Audrey Mulder
Randy and Pat Burckhard

In Memory of Thomas J. Myhra
Jack and Phyllis Geving

In Memory of Robert K. Nelson
Hermelle Wilson

In Memory of Merva Nordin
Dan and Jeri Langemo

In Memory of Terry A. Peterson
Darrel and Teresa Loftesnes

In Memory of Tammy L. Pinnow
Kevin and Renae Yale

In Memory of Oneita Press
Barney Greenspan and Valeda Steinle
Greenspan

In Memory of Jean Quam Brown
Steven and Connie Irely

In Memory of Winston D. Rasmusson
Lynn W. Aas
Sertoma Club of Minot

In Memory of Emma Rau
Arvin and Pat Swanson

In Memory of Robert J. Retterath
Don and Bonnie Trueblood

In Memory of Lynne S. Rumney
Marilyn N. Grossblatt

In Memory of Ernest B. Selland
David and Kathy Aas
Lynn W. Aas
Randy and Pat Burckhard
Mel and Yvonne Hoover
Don and Sherry Hummel

In Memory of Marilyn J. Selland
Randy and Pat Burckhard

In Memory of Rose A. Slaughter
Kevin and Renae Yale

In Memory of Chester A. Smith
Larry and Caren Barnett
Dale and Nicola Roed
Margaret E. Shea

In Memory of Jock R. Stevick
Dan and Jeri Langemo

In Memory of Almon B. Strong
Marv and Barb Semrau

In Memory of Iver M. Suess
Hermelle Wilson

In Memory of Charles D. Swanson
Hermelle Wilson

In Memory of Elsie M. Trueblood
David and Kathy Aas
Rick and Andrea Hedberg

In Memory of Joyce A. Tryhus
Arvin and Pat Swanson

In Memory of Laverne C. Tweten
Hermelle Wilson

In Memory of Lando D. Vix
Dale and Nicola Roed
June Vix

In Memory of Douglas Wick
Barney Greenspan and Valeda Steinle
Greenspan

In Memory of Mary A. Wolfe
Randy and Pat Burckhard

In Memory of Dudley Zimmerman
Lynn W. Aas



Development Foundation
500 University Ave W
Minot, ND 58707

Change service requested

Non-profit org.
U.S. Postage
PAID
Permit No. 1890
Fargo, ND 58102

Minot State **NOTES**
H  **OME**
COMING  **∞**
A Tail of Tradition

MSU's **90th**
Homecoming!

Details at: MinotStateU.edu/Alumni

SEPT. 16 – 23

MONDAY, SEPTEMBER 17

Beaver Booster Golf Scramble

For more information contact Brock Wepler
at 701-858-4451.

WEDNESDAY, SEPTEMBER 19

Community Block Party • 5 – 7 P.M.

On the loop in front of Old Main

THURSDAY, SEPTEMBER 20

Golden Awards Dinner • 6 P.M.

MSU Conference Center

FRIDAY, SEPTEMBER 21

Alumni & Friends Reunions • 7 – 11 P.M. • Grand Hotel

- Native American Students
- Football
- Sigma Tau Gamma Fraternity
- Veteran Students

Please visit MinotStateU.edu/Alumni to register.

SATURDAY, SEPTEMBER 22

Parade begins at 11 A.M. Tailgate & Football follow

If time allows, reunion groups will be recognized on the
field at half time of the football game.